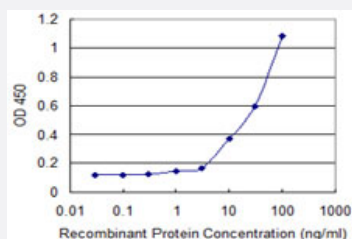


# KLK13 monoclonal antibody (M01), clone 1G9

Catalog # H00026085-M01

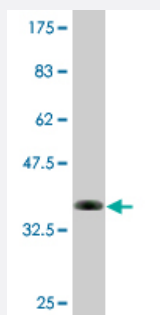
Size 100 ug

## Applications



### Sandwich ELISA (Recombinant protein)

Detection limit for recombinant GST tagged KLK13 is 1 ng/ml as a capture antibody.



Western Blot detection against Immunogen (36.63 KDa) .

## Specification

### Product Description

Mouse monoclonal antibody raised against a partial recombinant KLK13.

### Immunogen

KLK13 (NP\_056411.1, 179 a.a. ~ 277 a.a) partial recombinant protein with GST tag. MW of the GST tag alone is 26 KDa.

### Sequence

ANIQLRSDEECRQVYPGKITDNMLCAGTKEGGKDSCEGDSGGPLVCNRTL YGMVSWGDFPCGQP  
DRPGVYTRVSRVYLWIRETIRKYETQQQKWLGKGPQ

### Host

Mouse

### Reactivity

Human

Interspecies Antigen Sequence	Mouse (78); Rat (79)
Isotype	IgG2b Kappa
Quality Control Testing	Antibody Reactive Against Recombinant Protein. Western Blot detection against Immunogen (36.63 KDa) .
Storage Buffer	In 1x PBS, pH 7.4
Storage Instruction	Store at -20°C or lower. Aliquot to avoid repeated freezing and thawing.

## Applications

- Western Blot (Recombinant protein)

[Protocol Download](#)

- Sandwich ELISA (Recombinant protein)

Detection limit for recombinant GST tagged KLK13 is 1 ng/ml as a capture antibody.

[Protocol Download](#)

- ELISA

## Gene Info — KLK13

Entrez GeneID	<a href="#">26085</a>
GeneBank Accession#	<a href="#">NM_015596</a>
Protein Accession#	<a href="#">NP_056411.1</a>
Gene Name	KLK13
Gene Alias	DKFZp586J1923, KLK-L4, KLKL4
Gene Description	kallikrein-related peptidase 13
Omim ID	<a href="#">605505</a>
Gene Ontology	<a href="#">Hyperlink</a>

**Gene Summary**

Kallikreins are a subgroup of serine proteases having diverse physiological functions. Growing evidence suggests that many kallikreins are implicated in carcinogenesis and some have potential as novel cancer and other disease biomarkers. This gene is one of the fifteen kallikrein subfamily members located in a cluster on chromosome 19. Expression of this gene is regulated by steroid hormones and may be useful as a marker for breast cancer. An additional transcript variant has been identified, but its full length sequence has not been determined. [provided by RefSeq]

**Other Designations**

kallikrein 13|kallikrein-like gene 4

**Disease**

- [Genetic Predisposition to Disease](#)
- [Prostatic Neoplasms](#)