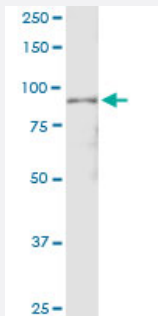


APPL1 (Human) IP-WB Antibody Pair

Catalog # H00026060-PW1

Size 1 Set

Applications



Immunoprecipitation of APPL1 transfected lysate using rabbit polyclonal anti-APPL1 and Protein A Magnetic Bead ([U0007](#)), and immunoblotted with mouse polyclonal anti-APPL1.

Specification

Product Description	This IP-WB antibody pair set comes with one antibody for immunoprecipitation and another to detect the precipitated protein in western blot.
Reactivity	Human
Interspecies Antigen Sequence	Mouse (93)
Quality Control Testing	Immunoprecipitation-Western Blot (IP-WB) Immunoprecipitation of APPL1 transfected lysate using rabbit polyclonal anti-APPL1 and Protein A Magnetic Bead (U0007), and immunoblotted with mouse polyclonal anti-APPL1.
Supplied Product	Antibody pair set content: 1. Antibody pair for IP: rabbit polyclonal anti-APPL1 (300 ul) 2. Antibody pair for WB: mouse polyclonal anti-APPL1 (50 ul)
Storage Instruction	Store reagents of the antibody pair set at -20°C or lower. Please aliquot to avoid repeated freeze thaw cycle. Reagents should be returned to -20°C storage immediately after use.

Applications

- Immunoprecipitation-Western Blot

[Protocol Download](#)

Gene Info — APPL1

Entrez GeneID [26060](#)

Gene Name APPL1

Gene Alias APPL, DIP13alpha

Gene Description adaptor protein, phosphotyrosine interaction, PH domain and leucine zipper containing 1

Omim ID [604299](#)

Gene Ontology [Hyperlink](#)

Gene Summary The protein encoded by this gene has been shown to be involved in the regulation of cell proliferation, and in the crosstalk between the adiponectin signalling and insulin signalling pathways. The encoded protein binds many other proteins, including RAB5A, DCC, AKT2, PIK3CA, adiponectin receptors, and proteins of the NuRD/MeCP1 complex. This protein is found associated with endosomal membranes, but can be released by EGF and translocated to the nucleus. [provided by RefSeq]

Other Designations AKT2 interactor|adaptor protein containing pH domain, PTB domain and leucine zipper motif 1|signaling adaptor protein DIP13alpha

Pathway

- [Colorectal cancer](#)
- [Pathways in cancer](#)

Disease

- [Diabetes Mellitus](#)
- [Dyslipidemias](#)
- [Inflammation](#)
- [Insulin Resistance](#)

- [Prediabetic State](#)