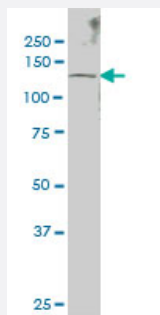


# SENTP6 monoclonal antibody (M01), clone 4B7

Catalog # H00026054-M01

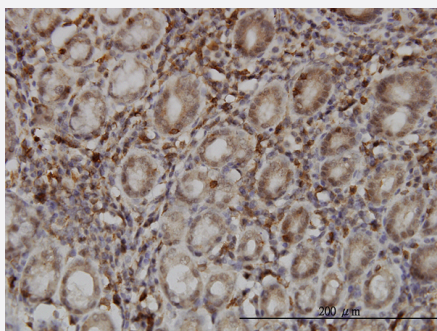
Size 100 ug

## Applications



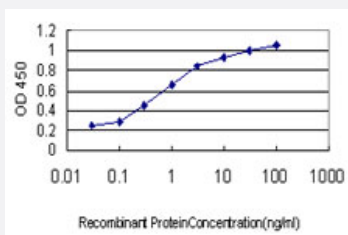
### Western Blot (Cell lysate)

SENTP6 monoclonal antibody (M01), clone 4B7 Western Blot analysis of SENTP6 expression in IMR-32 ( Cat # L008V1 ).



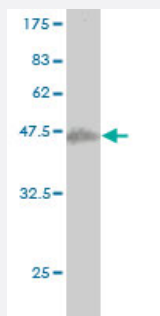
### Immunohistochemistry (Formalin/PFA-fixed paraffin-embedded sections)

Immunoperoxidase of monoclonal antibody to SENTP6 on formalin-fixed paraffin-embedded human stomach. [antibody concentration 3 ug/ml]



### Sandwich ELISA (Recombinant protein)

Detection limit for recombinant GST tagged SENTP6 is approximately 0.03ng/ml as a capture antibody.



Western Blot detection against Immunogen (37.84 KDa) .

## Specification

<b>Product Description</b>	Mouse monoclonal antibody raised against a partial recombinant SENP6.
<b>Immunogen</b>	SENP6 (NP_056386, 1 a.a. ~ 110 a.a) partial recombinant protein with GST tag. MW of the GST tag alone is 26 KDa.
<b>Sequence</b>	MAAGKSGGSAGEITFLEALARSESKRDGGFKNNWSFDHEEESEGD TDKDG TNLLSVDEDEDSE TSKGKKLNR RSEMANSSGEFILKTYVRRNKSESFKTLKGNPIGLNM
<b>Host</b>	Mouse
<b>Reactivity</b>	Human
<b>Interspecies Antigen Sequence</b>	Mouse (79); Rat (80)
<b>Isotype</b>	IgG2a Kappa
<b>Quality Control Testing</b>	Antibody Reactive Against Recombinant Protein. Western Blot detection against Immunogen (37.84 KDa) .
<b>Storage Buffer</b>	In 1x PBS, pH 7.4
<b>Storage Instruction</b>	Store at -20°C or lower. Aliquot to avoid repeated freezing and thawing.

## Applications

- Western Blot (Cell lysate)

SENP6 monoclonal antibody (M01), clone 4B7 Western Blot analysis of SENP6 expression in IMR-32 ( Cat # L008V1 ).

[Protocol Download](#)

- Western Blot (Recombinant protein)

[Protocol Download](#)

- Immunohistochemistry (Formalin/PFA-fixed paraffin-embedded sections)

Immunoperoxidase of monoclonal antibody to SENP6 on formalin-fixed paraffin-embedded human stomach. [antibody concentration 3 ug/ml]

[Protocol Download](#)

- Sandwich ELISA (Recombinant protein)

Detection limit for recombinant GST tagged SENP6 is approximately 0.03ng/ml as a capture antibody.

[Protocol Download](#)

- ELISA

## Gene Info — SENP6

Entrez GeneID [26054](#)

GeneBank Accession# [NM\\_015571](#)

Protein Accession# [NP\\_056386](#)

Gene Name SENP6

Gene Alias FLJ11355, FLJ11887, KIAA0389, KIAA0797, SSP1, SUSP1

Gene Description SUMO1/sentrin specific peptidase 6

Omim ID [605003](#)

Gene Ontology [Hyperlink](#)

### Gene Summary

Ubiquitin-like molecules (UBLs), such as SUMO1 (UBL1; MIM 601912), are structurally related to ubiquitin (MIM 191339) and can be ligated to target proteins in a similar manner as ubiquitin. However, covalent attachment of UBLs does not result in degradation of the modified proteins. SUMO 1 modification is implicated in the targeting of RANGAP1 (MIM 602362) to the nuclear pore complex, as well as in stabilization of I-kappa-B-alpha (NFKBIA; MIM 164008) from degradation by the 26S proteasome. Like ubiquitin, UBLs are synthesized as precursor proteins, with 1 or more amino acids following the C-terminal glycine-glycine residues of the mature UBL protein. Thus, the tail sequences of the UBL precursors need to be removed by UBL-specific proteases, such as SENP6, prior to their conjugation to target proteins (Kim et al., 2000 [PubMed 10799485]). SENPs also display isopeptidase activity for deconjugation of SUMO-conjugated substrates (Lima and Reverter, 2008 [PubMed 18799455]).[supplied by OMIM]

## Publication Reference

- [RAD51AP1 Is an Essential Mediator of Alternative Lengthening of Telomeres.](#)

Barroso-González J, García-Expósito L, Hoang SM, Lynskey ML, Roncaioli JL, Ghosh A, Wallace CT, Modesti M, Bernstein KA, Sarkar SN, Watkins SC, O'Sullivan RJ.

Molecular Cell 2019 Oct; 76(1):217.

Application: WB, Human, HeLa, U-2 OS cells

- [The Latency-Associated Nuclear Antigen of Kaposi's Sarcoma-Associated Herpesvirus Inhibits Expression of SUMO/sentrin Specific Peptidase 6 to Facilitate Latency Establishment.](#)

Lin X, Sun R, Zhang F, Gao Y, Bin L, Lan K.

Journal of Virology 2017 Aug; 91(17): e00806-17.

Application: IF, WB, Human, HEK 293T, HeLa, SLK cells

- [Negative Regulation of TLR Inflammatory Signaling by the SUMO-deconjugating Enzyme SENP6.](#)

Liu X, Chen W, Wang Q, Li L, Wang C.

PLoS Pathogens 2013 Jun; 9(6):e1003480.

Application: WB-Tr, Human, Mouse, HEK 293T, Mouse kupffer cells

- [Regulation of DNA repair through deSUMOylation and SUMOylation of replication protein A complex.](#)

Dou H, Huang C, Singh M, Carpenter PB, Yeh ET.

Molecular Cell 2010 Aug; 39(3):333.

Application: IP, WB-Ce, Human, HeLa cells

- [SENP3-mediated de-conjugation of SUMO2/3 from promyelocytic leukemia is correlated with accelerated cell proliferation under mild oxidative stress.](#)

Han Y, Huang C, Sun X, Xiang B, Wang M, Yeh ET, Chen Y, Li H, Shi G, Cang H, Sun Y, Wang J, Wang W, Gao F, Yi J.

The Journal of Biological Chemistry 2010 Apr; 285(17):12906.

Application: WB-Tr, Mouse, NIH/3T3 cells