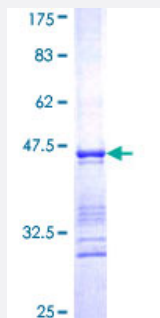


# CLIC4 (Human) Recombinant Protein (Q01)

Catalog # H00025932-Q01

Size 25 ug, 10 ug

## Applications



## Specification

<b>Product Description</b>	Human CLIC4 partial ORF ( NP_039234, 91 a.a. - 190 a.a.) recombinant protein with GST-tag at N-terminal.
<b>Sequence</b>	IEEFLEEVLCPKYLKLSPKHPESENTAGMDIFAKFSAYIKNSRPEANEALERGLLKTQLDEYLNS PLPDEIDENSMEDIKFSTRKFLDGNEMTLADCN
<b>Host</b>	Wheat Germ (in vitro)
<b>Theoretical MW (kDa)</b>	36.74
<b>Preparation Method</b>	<a href="#">in vitro wheat germ expression system</a>
<b>Purification</b>	Glutathione Sepharose 4 Fast Flow
<b>Quality Control Testing</b>	12.5% SDS-PAGE Stained with Coomassie Blue.
<b>Storage Buffer</b>	50 mM Tris-HCl, 10 mM reduced Glutathione, pH=8.0 in the elution buffer.
<b>Storage Instruction</b>	Store at -80°C. Aliquot to avoid repeated freezing and thawing.
<b>Note</b>	Best use within three months from the date of receipt of this protein.

## Applications

- Enzyme-linked Immunoabsorbent Assay
- Western Blot (Recombinant protein)
- Antibody Production
- Protein Array

## Gene Info — CLIC4

Entrez GeneID	<a href="#">25932</a>
GeneBank Accession#	<a href="#">NM_013943</a>
Protein Accession#	<a href="#">NP_039234</a>
Gene Name	CLIC4
Gene Alias	CLIC4L, DKFZp566G223, FLJ38640, H1, MTCLIC, huH1, p64H1
Gene Description	chloride intracellular channel 4
Omim ID	<a href="#">606536</a>
Gene Ontology	<a href="#">Hyperlink</a>
Gene Summary	Chloride channels are a diverse group of proteins that regulate fundamental cellular processes including stabilization of cell membrane potential, transepithelial transport, maintenance of intracellular pH, and regulation of cell volume. Chloride intracellular channel 4 (CLIC4) protein, encoded by the CLIC4 gene, is a member of the p64 family; the gene is expressed in many tissues and exhibits a intracellular vesicular pattern in Panc-1 cells (pancreatic cancer cells). [provided by RefSeq]
Other Designations	OTTHUMP00000003380 chloride intracellular channel 4 like

## Disease

- [Tobacco Use Disorder](#)