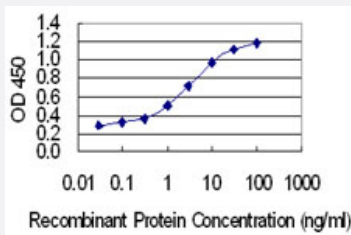


CCDC28A monoclonal antibody (M02), clone 6F2

Catalog # H00025901-M02

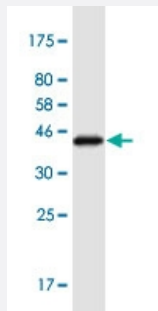
Size 100 ug

Applications



Sandwich ELISA (Recombinant protein)

Detection limit for recombinant GST tagged CCDC28A is 0.03 ng/ml as a capture antibody.



Western Blot detection against Immunogen (44.3 KDa) .

Specification

Product Description	Mouse monoclonal antibody raised against a full-length recombinant CCDC28A.
Immunogen	CCDC28A (AAH04464.1, 1 a.a. ~ 162 a.a) full-length recombinant protein with GST tag. MW of the GST tag alone is 26 KDa.
Sequence	MPKKNAIPVSKSTGFSNPASQSTSQRPKLKRVMEKTKPQGEGKGAQSTPIQHSFLTVDVQ EMERGLLSLLNDFHSGKLQAFGNECSIEQMEHVRGMQEKLARLNLELYGELEELPEDKRKTASD SNLDRLLSDLEELNSSIQKLHLADAQDVPNTSAS
Host	Mouse
Reactivity	Human

Interspecies Antigen Sequence	Mouse (94); Rat (91)
Isotype	IgG2a Kappa
Quality Control Testing	Antibody Reactive Against Recombinant Protein. Western Blot detection against Immunogen (44.3 KDa) .
Storage Buffer	In 1x PBS, pH 7.4
Storage Instruction	Store at -20°C or lower. Aliquot to avoid repeated freezing and thawing.

Applications

- Western Blot (Recombinant protein)

[Protocol Download](#)

- Sandwich ELISA (Recombinant protein)

Detection limit for recombinant GST tagged CCDC28A is 0.03 ng/ml as a capture antibody.

[Protocol Download](#)

- ELISA

Gene Info — CCDC28A

Entrez GeneID	25901
GeneBank Accession#	BC004464.1
Protein Accession#	AAH04464.1
Gene Name	CCDC28A
Gene Alias	C6orf80, CCRL1AP, DKFZp586D0623, MGC131913
Gene Description	coiled-coil domain containing 28A
Gene Ontology	Hyperlink
Gene Summary	This gene is located in a region close to the locus of the pseudogene of chemokine (C-C motif) receptor-like 1 on chromosome 6. The specific function of this gene has not yet been determined. [provided by RefSeq]

Other DesignationsOTTHUMP00000017302|chemokine C-C motif receptor-like 1 adjacent
