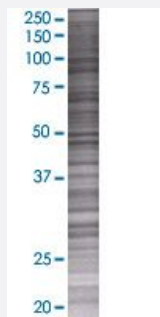


HOM-TES-103 293T Cell Transient Overexpression Lysate(Denatured)

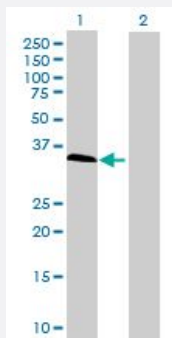
Catalog # H00025900-T01 Size 100 uL

Applications



SDS-PAGE Gel

HOM-TES-103 transfected lysate.



Western Blot

Lane 1: HOM-TES-103 transfected lysate (22.11 KDa)

Lane 2: Non-transfected lysate.

Specification

Transfected Cell Line	293T
Plasmid	pCMV-HOM-TES-103 full-length
Host	Human
Theoretical MW (kDa)	22.11
Interspecies Antigen Sequence	Mouse (97); Rat (97)

Quality Control Testing

Transient overexpression cell lysate was tested with Anti-HOM-TES-103 antibody ([H00025900-B01](#)) by Western Blots.
SDS-PAGE Gel
HOM-TES-103 transfected lysate.
Western Blot
Lane 1: HOM-TES-103 transfected lysate (22.11 KDa)
Lane 2: Non-transfected lysate.

Storage Buffer

1X Sample Buffer (50 mM Tris-HCl, 2% SDS, 10% glycerol, 300 mM 2-mercaptoethanol, 0.01% Bromophenol blue)

Storage Instruction

Store at -80°C. Aliquot to avoid repeated freezing and thawing.

Applications

- Western Blot

Gene Info — IFFO1

Entrez GeneID

[25900](#)

GeneBank Accession#

[NM_080731.2](#)

Protein Accession#

[NP_542769.2](#)

Gene Name

IFFO1

Gene Alias

DKFZp586I2223, FLJ20703, HOM-TES-103, IFFO, MGC117359

Gene Description

intermediate filament family orphan 1

Omim ID

[610495](#)

Gene Ontology

[Hyperlink](#)

Gene Summary

This gene is a member of the intermediate filament family. Intermediate filaments are proteins which are primordial components of the cytoskeleton and nuclear envelope. The proteins encoded by the members of this gene family are evolutionarily and structurally related but have limited sequence homology, with the exception of the central rod domain. Alternative splicing has been observed for this gene and three transcript variants encoding different isoforms have been identified. Other alternatively spliced transcripts may exist, but their biological validity has not been confirmed. [provided by RefSeq]

Other Designations

HOM-TES-103 tumor antigen-like|intermediate filament family orphan|intermediate filament-like MGC:2625