

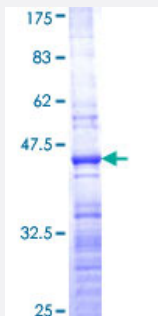
Full-Length

## RPL36 (Human) Recombinant Protein (P02)

Catalog # H00025873-P02

Size 25 ug, 10 ug

### Applications



### Specification

Product Description	Human RPL36 full-length ORF ( NP_378669.1, 1 a.a. - 105 a.a.) recombinant protein with GST-tag at N-terminal.
Sequence	MALRYPMAVGLNKGHKVTKNVSKPRHSRRRGRLTKHTKFVRDMIREVCGFAPYERRAMELLKVS KDKRALKFIKRVGTHIRAKRKREELSNVLAAMRKAANKD
Host	Wheat Germ (in vitro)
Theoretical MW (kDa)	37.29
Interspecies Antigen Sequence	Rat (99)
Preparation Method	<a href="#">in vitro wheat germ expression system</a>
Purification	Glutathione Sepharose 4 Fast Flow
Quality Control Testing	12.5% SDS-PAGE Stained with Coomassie Blue.
Storage Buffer	50 mM Tris-HCl, 10 mM reduced Glutathione, pH=8.0 in the elution buffer.
Storage Instruction	Store at -80°C. Aliquot to avoid repeated freezing and thawing.
Note	Best use within three months from the date of receipt of this protein.

## Applications

- Enzyme-linked Immunoabsorbent Assay
- Western Blot (Recombinant protein)
- Antibody Production
- Protein Array

## Gene Info — RPL36

Entrez GeneID [25873](#)

GeneBank Accession# [NM\\_033643.2](#)

Protein Accession# [NP\\_378669.1](#)

Gene Name RPL36

Gene Alias DKFZp566B023

Gene Description ribosomal protein L36

Gene Ontology [Hyperlink](#)

**Gene Summary** Ribosomes, the organelles that catalyze protein synthesis, consist of a small 40S subunit and a large 60S subunit. Together these subunits are composed of 4 RNA species and approximately 80 structurally distinct proteins. This gene encodes a ribosomal protein that is a component of the 60S subunit. The protein belongs to the L36E family of ribosomal proteins. It is located in the cytoplasm. Transcript variants derived from alternative splicing exist; they encode the same protein. As is typical for genes encoding ribosomal proteins, there are multiple processed pseudogenes of this gene dispersed through the genome. [provided by RefSeq]

**Other Designations** 60S ribosomal protein L36

## Pathway

- [Ribosome](#)