

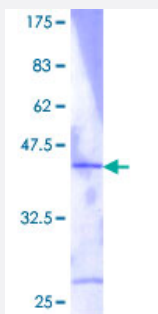
Full-Length

RPL36 (Human) Recombinant Protein (P01)

Catalog # H00025873-P01

Size 25 ug, 10 ug

Applications



Specification

Product Description	Human RPL36 full-length ORF (AAH04971, 1 a.a. - 105 a.a.) recombinant protein with GST-tag at N-terminal.
Sequence	MALRYPMAVGLNKGHKVTKNVSKPRHSRRRGRLTKHTKFVRDMIREVCGFAPYERRAMELLKVS KDKRALKFIKRVGTHIRAKRKREELSNVLAAMRKAACKD
Host	Wheat Germ (in vitro)
Theoretical MW (kDa)	37.18
Interspecies Antigen Sequence	Rat (99)
Preparation Method	in vitro wheat germ expression system
Purification	Glutathione Sepharose 4 Fast Flow
Quality Control Testing	12.5% SDS-PAGE Stained with Coomassie Blue.
Storage Buffer	50 mM Tris-HCl, 10 mM reduced Glutathione, pH=8.0 in the elution buffer.
Storage Instruction	Store at -80°C. Aliquot to avoid repeated freezing and thawing.
Note	Best use within three months from the date of receipt of this protein.

Applications

- Enzyme-linked Immunoabsorbent Assay
- Western Blot (Recombinant protein)
- Antibody Production
- Protein Array

Gene Info — RPL36

Entrez GeneID [25873](#)

GeneBank Accession# [BC004971.1](#)

Protein Accession# [AAH04971](#)

Gene Name RPL36

Gene Alias DKFZp566B023

Gene Description ribosomal protein L36

Gene Ontology [Hyperlink](#)

Gene Summary Ribosomes, the organelles that catalyze protein synthesis, consist of a small 40S subunit and a large 60S subunit. Together these subunits are composed of 4 RNA species and approximately 80 structurally distinct proteins. This gene encodes a ribosomal protein that is a component of the 60S subunit. The protein belongs to the L36E family of ribosomal proteins. It is located in the cytoplasm. Transcript variants derived from alternative splicing exist; they encode the same protein. As is typical for genes encoding ribosomal proteins, there are multiple processed pseudogenes of this gene dispersed through the genome. [provided by RefSeq]

Other Designations 60S ribosomal protein L36

Pathway

- [Ribosome](#)