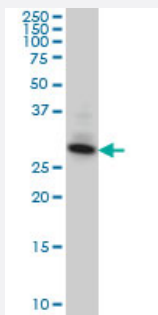


SUMF2 monoclonal antibody (M02), clone 4B3

Catalog # H00025870-M02

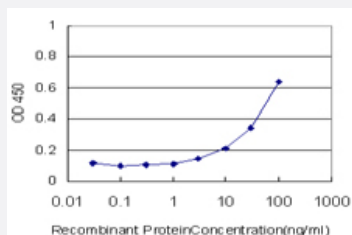
Size 100 ug

Applications



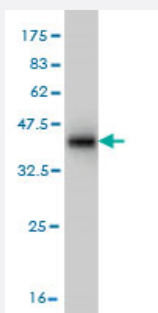
Western Blot (Cell lysate)

SUMF2 monoclonal antibody (M02), clone 4B3 Western Blot analysis of SUMF2 expression in A-431 (Cat # L015V1).



Sandwich ELISA (Recombinant protein)

Detection limit for recombinant GST tagged SUMF2 is approximately 3ng/ml as a capture antibody.



Western Blot detection against Immunogen (36.74 KDa) .

Specification

Product Description

Mouse monoclonal antibody raised against a partial recombinant SUMF2.

Immunogen	SUMF2 (NP_056226, 26 a.a. ~ 125 a.a) partial recombinant protein with GST tag. MW of the GST tag alone is 26 KDa.
Sequence	QATSMVQLQGGRFLMGNTNSPDSRDGEGPVREATVKPFAIDIFPVTNKDFRDFVREKKYRTEAEM FGWSFVFEDFVSDELNRKATQPMKSVLWWLPVEKAF
Host	Mouse
Reactivity	Human
Interspecies Antigen Sequence	Mouse (76); Rat (77)
Isotype	IgG2a Kappa
Quality Control Testing	Antibody Reactive Against Recombinant Protein. Western Blot detection against Immunogen (36.74 KDa) .
Storage Buffer	In 1x PBS, pH 7.4
Storage Instruction	Store at -20°C or lower. Aliquot to avoid repeated freezing and thawing.

Applications

- Western Blot (Cell lysate)

SUMF2 monoclonal antibody (M02), clone 4B3 Western Blot analysis of SUMF2 expression in A-431 (Cat # L015V1).

[Protocol Download](#)

- Western Blot (Recombinant protein)

[Protocol Download](#)

- Sandwich ELISA (Recombinant protein)

Detection limit for recombinant GST tagged SUMF2 is approximately 3ng/ml as a capture antibody.

[Protocol Download](#)

- ELISA

Gene Info — SUMF2

Entrez GeneID [25870](#)

GeneBank Accession#	NM_015411
Protein Accession#	NP_056226
Gene Name	SUMF2
Gene Alias	DKFZp566I1024, DKFZp686I1024, DKFZp686L17160, DKFZp781L1035, MGC99485, pFGE
Gene Description	sulfatase modifying factor 2
Omim ID	607940
Gene Ontology	Hyperlink
Gene Summary	<p>The catalytic sites of sulfatases are only active if they contain a unique amino acid, C-alpha-formyl glycine (FGly). The FGly residue is posttranslationally generated from a cysteine by enzymes with FGly-generating activity. The gene described in this record is a member of the sulfatase-modifying factor family and encodes a protein with a DUF323 domain that localizes to the lumen of the endoplasmic reticulum. This protein has low levels of FGly-generating activity but can heterodimerize with another family member - a protein with high levels of FGly-generating activity. Alternate transcriptional splice variants, encoding different isoforms, have been characterized. [provided by RefSeq]</p>
Other Designations	C-alpha-formylglycine-generating enzyme 2 paralog of the formylglycine-generating enzyme