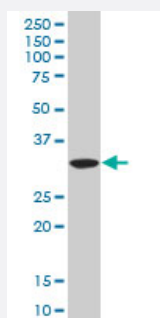


SUMF2 polyclonal antibody (A01)

Catalog # H00025870-A01

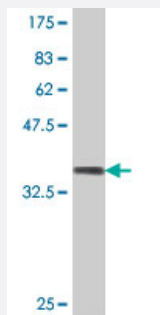
Size 50 uL

Applications



Western Blot (Cell lysate)

SUMF2 polyclonal antibody (A01), Lot # 060619JCS1 Western Blot analysis of SUMF2 expression in HepG2 (Cat # L019V1).



Western Blot detection against Immunogen (37.11 KDa) .

Specification

Product Description	Mouse polyclonal antibody raised against a partial recombinant SUMF2.
Immunogen	SUMF2 (NP_056226, 26 a.a. ~ 125 a.a) partial recombinant protein with GST tag.
Sequence	QATSMVQLQGGRFLMGNTNSPDSRDGEGPVREATVKPFADIFPVTNKDFRDFVREKKYRTEAM FGWSFVFEDFVSDELNRNKATQPMKSVLWWLPVEKAF
Host	Mouse
Reactivity	Human
Interspecies Antigen Sequence	Mouse (76); Rat (77)

Quality Control Testing

Antibody Reactive Against Recombinant Protein.
Western Blot detection against Immunogen (37.11 KDa) .

Storage Buffer

50 % glycerol

Storage Instruction

Store at -20°C or lower. Aliquot to avoid repeated freezing and thawing.

Applications

- Western Blot (Cell lysate)

SUMF2 polyclonal antibody (A01), Lot # 060619JCS1 Western Blot analysis of SUMF2 expression in HepG2 (Cat # L019V1).

[Protocol Download](#)

- Western Blot (Recombinant protein)

[Protocol Download](#)

- ELISA

Gene Info — SUMF2

Entrez GeneID

[25870](#)

GeneBank Accession#

[NM_015411](#)

Protein Accession#

[NP_056226](#)

Gene Name

SUMF2

Gene Alias

DKFZp566I1024, DKFZp686I1024, DKFZp686L17160, DKFZp781L1035, MGC99485, pFGE

Gene Description

sulfatase modifying factor 2

Omim ID

[607940](#)

Gene Ontology

[Hyperlink](#)

Gene Summary

The catalytic sites of sulfatases are only active if they contain a unique amino acid, C-alpha-formylglycine (FGly). The FGly residue is posttranslationally generated from a cysteine by enzymes with FGly-generating activity. The gene described in this record is a member of the sulfatase-modifying factor family and encodes a protein with a DUF323 domain that localizes to the lumen of the endoplasmic reticulum. This protein has low levels of FGly-generating activity but can heterodimerize with another family member - a protein with high levels of FGly-generating activity. Alternate transcriptional splice variants, encoding different isoforms, have been characterized. [provided by RefSeq]

Other Designations

C-alpha-formylglycine-generating enzyme 2|paralog of the formylglycine-generating enzyme