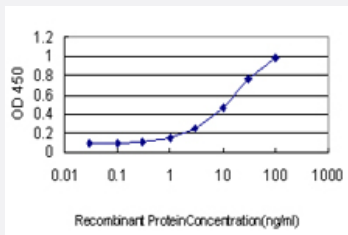


# BRMS1 monoclonal antibody (M03), clone M1

Catalog # H00025855-M03

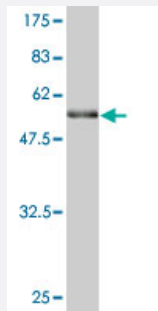
Size 100 ug

## Applications



### Sandwich ELISA (Recombinant protein)

Detection limit for recombinant GST tagged BRMS1 is approximately 0.3ng/ml as a capture antibody.



Western Blot detection against Immunogen (52.8 KDa) .

## Specification

<b>Product Description</b>	Mouse monoclonal antibody raised against a full length recombinant BRMS1.
<b>Immunogen</b>	BRMS1 (AAH09834, 1 a.a. ~ 246 a.a) full-length recombinant protein with GST tag. MW of the GST tag alone is 26 KDa.
<b>Sequence</b>	MPVQPPSKDTEEMEAEGDSAAEMNGEEEESEEEERSGSQTESEEEESSEMDDDEDYERRRSECV SEMLDLEKQFSELKEKLFRRERLSQLRLRLLEEVGAERAPEYTEPLGGLQRSLKIRIQVAGIYKGFCL DVIRNKYECELQGAQKHLESEKLLLYDTLQGELQERIQRLEEDRQSLDLSSEWWDDKLHARGSS RSWDSLPPSKRKKAPLVSGPYVYMLQEIDILEDWTAIKKARAAVSPQKRKSDGP
<b>Host</b>	Mouse
<b>Reactivity</b>	Human

<b>Interspecies Antigen Sequence</b>	Mouse (92)
<b>Isotype</b>	IgG1 Kappa
<b>Quality Control Testing</b>	Antibody Reactive Against Recombinant Protein. Western Blot detection against Immunogen (52.8 KDa) .
<b>Storage Buffer</b>	In 1x PBS, pH 7.4
<b>Storage Instruction</b>	Store at -20°C or lower. Aliquot to avoid repeated freezing and thawing.

## Applications

- Western Blot (Recombinant protein)

[Protocol Download](#)

- Sandwich ELISA (Recombinant protein)

Detection limit for recombinant GST tagged BRMS1 is approximately 0.3ng/ml as a capture antibody.

[Protocol Download](#)

- ELISA

## Gene Info — BRMS1

<b>Entrez GeneID</b>	<a href="#">25855</a>
<b>GeneBank Accession#</b>	<a href="#">BC009834</a>
<b>Protein Accession#</b>	<a href="#">AAH09834</a>
<b>Gene Name</b>	BRMS1
<b>Gene Alias</b>	DKFZp564A063
<b>Gene Description</b>	breast cancer metastasis suppressor 1
<b>Omim ID</b>	<a href="#">606259</a>
<b>Gene Ontology</b>	<a href="#">Hyperlink</a>

**Gene Summary**

This gene reduces the metastatic potential, but not the tumorigenicity, of human breast cancer and melanoma cell lines. The protein encoded by this gene localizes primarily to the nucleus and is a component of the mSin3a family of histone deacetylase complexes (HDAC). The protein contains two coiled-coil motifs and several imperfect leucine zipper motifs. Alternative splicing results in two transcript variants encoding different isoforms. [provided by RefSeq]

**Other Designations**

breast cancer metastasis-suppressor 1