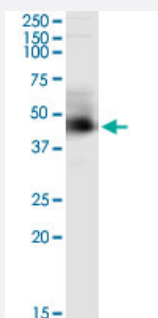


ARMC8 (Human) IP-WB Antibody Pair

Catalog # H00025852-PW1

Size 1 Set

Applications



Immunoprecipitation of ARMC8 transfected lysate using mouse monoclonal anti-ARMC8 and Protein A Magnetic Bead ([U0007](#)), and immunoblotted with mouse monoclonal anti-ARMC8.

Specification

Product Description	This IP-WB antibody pair set comes with one antibody for immunoprecipitation and another to detect the precipitated protein in western blot.
Reactivity	Human
Interspecies Antigen Sequence	Mouse (99); Rat (98)
Quality Control Testing	Immunoprecipitation-Western Blot (IP-WB) Immunoprecipitation of ARMC8 transfected lysate using mouse monoclonal anti-ARMC8 and Protein A Magnetic Bead (U0007), and immunoblotted with mouse monoclonal anti-ARMC8.
Supplied Product	Antibody pair set content: 1. Antibody pair for IP: mouse monoclonal anti-ARMC8 (300 ug) 2. Antibody pair for WB: mouse monoclonal anti-ARMC8 (50 ug)
Storage Instruction	Store reagents of the antibody pair set at -20°C or lower. Please aliquot to avoid repeated freeze thaw cycle. Reagents should be returned to -20°C storage immediately after use.

Applications

- Immunoprecipitation-Western Blot

[Protocol Download](#)

Gene Info — ARMC8

Entrez GeneID	25852
---------------	-----------------------

Gene Name	ARMC8
-----------	-------

Gene Alias	HSPC056, MGC10058, MGC4880, S863-2
------------	------------------------------------

Gene Description	armadillo repeat containing 8
------------------	-------------------------------

Gene Ontology	Hyperlink
---------------	---------------------------

Other Designations	-
--------------------	---