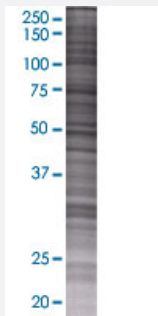


KLK5 293T Cell Transient Overexpression Lysate(Denatured)

Catalog # H00025818-T01

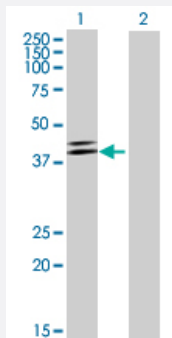
Size 100 uL

Applications



SDS-PAGE Gel

KLK5 transfected lysate.



Western Blot

Lane 1: KLK5 transfected lysate (32.34 KDa)

Lane 2: Non-transfected lysate.

Specification

Transfected Cell Line	293T
Plasmid	pCMV-KLK5 full-length
Host	Human
Theoretical MW (kDa)	32.34
Interspecies Antigen Sequence	Mouse (69); Rat (68)

Quality Control Testing

Transient overexpression cell lysate was tested with Anti-KLK5 antibody ([H00025818-B01](#)) by Western Blots.
SDS-PAGE Gel
KLK5 transfected lysate.
Western Blot
Lane 1: KLK5 transfected lysate (32.34 KDa)
Lane 2: Non-transfected lysate.

Storage Buffer

1X Sample Buffer (50 mM Tris-HCl, 2% SDS, 10% glycerol, 300 mM 2-mercaptoethanol, 0.01% Bromophenol blue)

Storage Instruction

Store at -80°C. Aliquot to avoid repeated freezing and thawing.

Applications

- Western Blot

Gene Info — KLK5

Entrez GeneID[25818](#)**GeneBank Accession#**[NM_012427.3](#)**Protein Accession#**[NP_036559.1](#)**Gene Name**

KLK5

Gene Alias

KLK-L2, KLKL2, SCTE

Gene Description

kallikrein-related peptidase 5

Omim ID[605643](#)**Gene Ontology**[Hyperlink](#)**Gene Summary**

Kallikreins are a subgroup of serine proteases having diverse physiological functions. Growing evidence suggests that many kallikreins are implicated in carcinogenesis and some have potential as novel cancer and other disease biomarkers. This gene is one of the fifteen kallikrein subfamily members located in a cluster on chromosome 19. Its expression is up-regulated by estrogens and progestins. The encoded protein is secreted and may be involved in desquamation in the epidermis. Alternative splicing results in multiple transcript variants encoding the same protein. [provided by RefSeq]

Other Designations

kallikrein 5|kallikrein-like protein 2|stratum corneum tryptic enzyme

Disease

- [Genetic Predisposition to Disease](#)
- [Prostatic Neoplasms](#)