

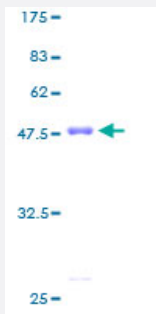
Full-Length

# GCA (Human) Recombinant Protein (P01)

Catalog # H00025801-P01

Size 25 ug, 10 ug

## Applications



## Specification

Product Description	Human GCA full-length ORF ( AAH05214, 1 a.a. - 217 a.a.) recombinant protein with GST-tag at N-terminal.
Sequence	MAYPGYGGGFGNFSIQVPGMQMGQPVPETGPAILLDGYSGPAYSDTYSSAGDSVYTYFSAVAGQ DGEVDAEELQRCLTQSGINGTYSFSLCTCRIMIAMLDRDHTGKMGFNAFKELWAALNAWKENF MTVDQDGS GTVEHHEL RQAIGLMGYRLSPQTLTTIVKRYSKNGRIFDDYVACCVKLRALTDFFRK RDHLQQGSANFIYDDFLQGTMAI
Host	Wheat Germ (in vitro)
Theoretical MW (kDa)	49.61
Interspecies Antigen Sequence	Mouse (81); Rat (80)
Preparation Method	<a href="#">in vitro wheat germ expression system</a>
Purification	Glutathione Sepharose 4 Fast Flow
Quality Control Testing	12.5% SDS-PAGE Stained with Coomassie Blue.
Storage Buffer	50 mM Tris-HCl, 10 mM reduced Glutathione, pH=8.0 in the elution buffer.
Storage Instruction	Store at -80°C. Aliquot to avoid repeated freezing and thawing.

## Note

Best use within three months from the date of receipt of this protein.

## Applications

- Enzyme-linked Immunoabsorbent Assay
- Western Blot (Recombinant protein)
- Antibody Production
- Protein Array

## Gene Info — GCA

Entrez GeneID [25801](#)

GeneBank Accession# [BC005214](#)

Protein Accession# [AAH05214](#)

Gene Name GCA

Gene Alias GCL

Gene Description grancalcin, EF-hand calcium binding protein

Omim ID [607030](#)

Gene Ontology [Hyperlink](#)

**Gene Summary** This gene product, grancalcin, is a calcium-binding protein abundant in neutrophils and macrophages. It belongs to the penta-EF-hand subfamily of proteins which includes sorcin, calpain, and ALG-2. Grancalcin localization is dependent upon calcium and magnesium. In the absence of divalent cation, grancalcin localizes to the cytosolic fraction; with magnesium alone, it partitions with the granule fraction; and in the presence of magnesium and calcium, it associates with both the granule and membrane fractions, suggesting a role for grancalcin in granule-membrane fusion and degranulation. [provided by RefSeq]

**Other Designations** grancalcin, EF-hand calcium-binding protein|grancalcin, penta-EF-hand protein

## Disease

- [Genetic Predisposition to Disease](#)
- [Multiple Sclerosis](#)