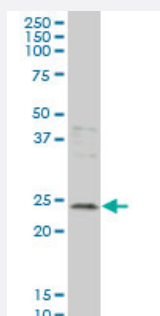


GCA monoclonal antibody (M01), clone 2F5

Catalog # H00025801-M01

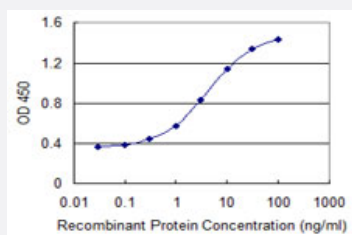
Size 100 ug

Applications



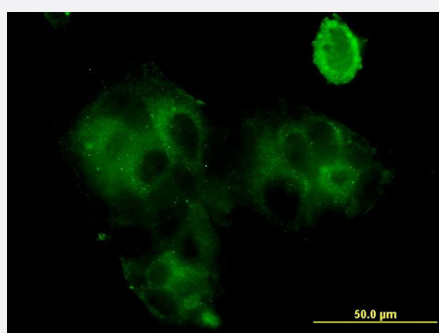
Western Blot (Cell lysate)

GCA monoclonal antibody (M01), clone 2F5 Western Blot analysis of GCA expression in MCF-7 (Cat # L046V1).



Sandwich ELISA (Recombinant protein)

Detection limit for recombinant GST tagged GCA is 0.03 ng/ml as a capture antibody.



Immunofluorescence

Immunofluorescence of monoclonal antibody to GCA on MCF-7 cell . [antibody concentration 10 ug/ml]



Western Blot detection against Immunogen (49.61 KDa) .

Specification

Product Description	Mouse monoclonal antibody raised against a full-length recombinant GCA.
Immunogen	GCA (AAH05214, 1 a.a. ~ 217 a.a) full-length recombinant protein with GST tag. MW of the GST tag alone is 26 KDa.
Sequence	MAYPGYGGGFGNFSIQVPGMQMGQVPETGPAILLDGYSGPAYSDTYSSAGDSVYTYFSAVAGQ DGEVDAEELQRCALTQSGINGTYSFSLCTCRIMIAMLDRDHTGKMGFNAFKELWAALNAWKENF MTVDQDGSSTVEHHELRLQAIGLMGYRLSPQTLTTIVKRYSKNGRIFDDYVACCVKLRALTDFFRK RDHLQQGSANFIYDDFLQGTMAI
Host	Mouse
Reactivity	Human
Interspecies Antigen Sequence	Mouse (81); Rat (80)
Isotype	IgG2a Kappa
Quality Control Testing	Antibody Reactive Against Recombinant Protein. Western Blot detection against Immunogen (49.61 KDa) .
Storage Buffer	In 1x PBS, pH 7.4
Storage Instruction	Store at -20°C or lower. Aliquot to avoid repeated freezing and thawing.

Applications

- Western Blot (Cell lysate)

GCA monoclonal antibody (M01), clone 2F5 Western Blot analysis of GCA expression in MCF-7 (Cat # L046V1).

[Protocol Download](#)

- Western Blot (Recombinant protein)

[Protocol Download](#)

- Sandwich ELISA (Recombinant protein)

Detection limit for recombinant GST tagged GCA is 0.03 ng/ml as a capture antibody.

[Protocol Download](#)

- ELISA

- Immunofluorescence

Immunofluorescence of monoclonal antibody to GCA on MCF-7 cell . [antibody concentration 10 ug/ml]

Gene Info — GCA

Entrez GeneID [25801](#)

GeneBank Accession# [BC005214](#)

Protein Accession# [AAH05214](#)

Gene Name GCA

Gene Alias GCL

Gene Description grancalcin, EF-hand calcium binding protein

Omim ID [607030](#)

Gene Ontology [Hyperlink](#)

Gene Summary This gene product, grancalcin, is a calcium-binding protein abundant in neutrophils and macrophages. It belongs to the penta-EF-hand subfamily of proteins which includes sorcin, calpain, and ALG-2. Grancalcin localization is dependent upon calcium and magnesium. In the absence of divalent cation, grancalcin localizes to the cytosolic fraction; with magnesium alone, it partitions with the granule fraction; and in the presence of magnesium and calcium, it associates with both the granule and membrane fractions, suggesting a role for grancalcin in granule-membrane fusion and degradation. [provided by RefSeq]

Other Designations grancalcin, EF-hand calcium-binding protein|grancalcin, penta-EF-hand protein

Disease

- [Genetic Predisposition to Disease](#)
- [Multiple Sclerosis](#)