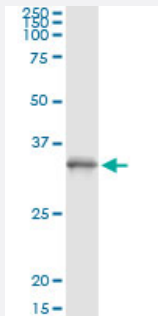


# PGLS (Human) IP-WB Antibody Pair

Catalog # H00025796-PW1

Size 1 Set

## Applications



Immunoprecipitation of PGLS transfected lysate using mouse monoclonal anti-PGLS and Protein A Magnetic Bead ([U0007](#)), and immunoblotted with rabbit polyclonal anti-PGLS.

## Specification

<b>Product Description</b>	This IP-WB antibody pair set comes with one antibody for immunoprecipitation and another to detect the precipitated protein in western blot.
<b>Reactivity</b>	Human
<b>Interspecies Antigen Sequence</b>	Mouse (88); Rat (88)
<b>Quality Control Testing</b>	Immunoprecipitation-Western Blot (IP-WB) Immunoprecipitation of PGLS transfected lysate using mouse monoclonal anti-PGLS and Protein A Magnetic Bead ( <a href="#">U0007</a> ), and immunoblotted with rabbit polyclonal anti-PGLS.
<b>Supplied Product</b>	Antibody pair set content: 1. Antibody pair for IP: mouse monoclonal anti-PGLS (300 ug) 2. Antibody pair for WB: rabbit polyclonal anti-PGLS (50 ul)
<b>Storage Instruction</b>	Store reagents of the antibody pair set at -20°C or lower. Please aliquot to avoid repeated freeze thaw cycle. Reagents should be returned to -20°C storage immediately after use.

## Applications

- Immunoprecipitation-Western Blot

[Protocol Download](#)

## Gene Info — PGLS

Entrez GeneID	<a href="#">25796</a>
---------------	-----------------------

Gene Name	PGLS
-----------	------

Gene Alias	6PGL
------------	------

Gene Description	6-phosphogluconolactonase
------------------	---------------------------

Omim ID	<a href="#">604951</a>
---------	------------------------

Gene Ontology	<a href="#">Hyperlink</a>
---------------	---------------------------

Other Designations	-
--------------------	---

## Pathway

- [Biosynthesis of alkaloids derived from histidine and purine](#)
- [Biosynthesis of plant hormones](#)
- [Metabolic pathways](#)
- [Pentose phosphate pathway](#)