

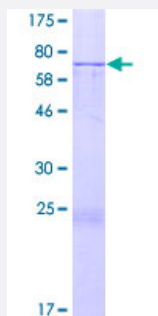
## Full-Length

# FJX1 (Human) Recombinant Protein (P01)

Catalog # H00024147-P01

Size 2 ug

## Applications



## Specification

### Product Description

Human FJX1 full-length ORF ( NP\_055159.2, 1 a.a. - 437 a.a.) recombinant protein with GST-tag at N-terminal.

### Sequence

MGRRMRGAAATAGLWLLALGSLLALWGGLLPRTLPASRPPEDRLPRRPARSGGPAPAPRFP  
LPPPLAWDARGGSLKTFRALLTLAAGADGPPRQSRSEPRWHVSARQPRPEESAAPHGGVFWWS  
RGLLEQVPPGFSEAQAAWLEAARGARMVALERGGCGRSSNRLARFADGTRACVRYGINPEQI  
QGEALSYLARLLGLQRHVPPLALARVEARGAQWAQVQEELRAAHWTEGSVVSLTRWLPNLTD  
VVVPAPWRSEDGRLRPLRDAGGELANLSQAELVDLVQWTDLILFDYLTANFDRLVSNLFSLQWD  
PRVMQRATSNLHRGPGGALVFLDNEAGLVHGYRVAGMWDKYNEPLLQSVCFRERTARRVLEL  
HRGQDAAARLLRLYRRHEPRFPELAALADPHAQLLQRRDLFLAKHILHCKAKYGRSGT

### Host

Wheat Germ (in vitro)

### Theoretical MW (kDa)

74.9

### Interspecies Antigen Sequence

Mouse (90); Rat (91)

### Preparation Method

[in vitro wheat germ expression system](#)

### Purification

Glutathione Sepharose 4 Fast Flow

### Quality Control Testing

12.5% SDS-PAGE Stained with Coomassie Blue.

|                     |  |
|---------------------|--|
| Storage Buffer      | 50 mM Tris-HCl, 10 mM reduced Glutathione, pH=8.0 in the elution buffer. |
| Storage Instruction | Store at -80°C. Aliquot to avoid repeated freezing and thawing.          |
| Note                | Best use within three months from the date of receipt of this protein.   |

## Applications

- Enzyme-linked Immunoabsorbent Assay
- Western Blot (Recombinant protein)
- Antibody Production
- Protein Array

## Gene Info — FJX1

|                     |  |
|---------------------|--|
| Entrez GeneID       | <a href="#">24147</a>  |
| GeneBank Accession# | <a href="#">NM_014344.2</a>  |
| Protein Accession#  | <a href="#">NP_055159.2</a>  |
| Gene Name           | FJX1   |
| Gene Alias          | FLJ22416, FLJ25593   |
| Gene Description    | four jointed box 1 (Drosophila)  |
| Gene Ontology       | <a href="#">Hyperlink</a>  |
| Gene Summary        | The protein encoded by this gene is the human ortholog of mouse and Drosophila four-jointed gene product. The Drosophila protein is important for growth and differentiation of legs and wings, and for proper development of the eyes. The exact function of this gene in humans is not known. [provided by RefSeq] |
| Other Designations  | four jointed box 1 putative secreted ligand homologous to fjx1   |