

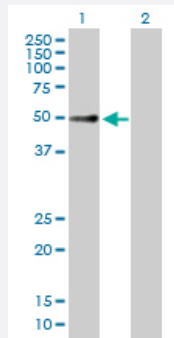
MaxPab®

FKBP8 purified MaxPab mouse polyclonal antibody (B02P)

Catalog # H00023770-B02P

Size 50 ug

Applications



Western Blot (Transfected lysate)

Western Blot analysis of FKBP8 expression in transfected 293T cell line ([H00023770-T01](#)) by FKBP8 MaxPab polyclonal antibody.

Lane 1: FKBP8 transfected lysate(45.43 KDa).

Lane 2: Non-transfected lysate.

Specification

Product Description	Mouse polyclonal antibody raised against a full-length human FKBP8 protein.
Immunogen	FKBP8 (NP_036313.3, 1 a.a. ~ 413 a.a) full-length human protein.
Sequence	MASCAEPSEPSAPLPAGVPPLEDFEVLGVEDAEGE EEEEEEEEEEDDLSELPPLEDMGQPP AEEAEQPGALAREFLAAMEPEPAPAPAEWLDILGNLLRKKTLVPGPPGSSRPVKGQVTVH LQTSLENGTRVQEEPELVFTLGDCDVIQALDLSVPLMDVGETAMVTADSKYCYGPQGSRSPYIPP HAALCLEVTLKTAVDGPDLEMLTGQERVALANRKRECGNAHYQRADFVLAANSYDLAIKAITSSA KVDMTFEEEAQLLQLKVKCLNNLAASQLKLDHYRAALRSCSLVLEHQPDNIKALFRKGKVLAAQQG EYSEAIPLRAALKLEPSNKTTHAELSKLVKKHAAQRSTETALYRKMLGNPSRLPAKCPGKGAWSIP WKWLFGATAVALGGVALSVVIAARN
Host	Mouse
Reactivity	Human
Interspecies Antigen Sequence	Mouse (90); Rat (91)
Quality Control Testing	Antibody reactive against mammalian transfected lysate.
Storage Buffer	In 1x PBS, pH 7.4

Storage Instruction

Store at -20°C or lower. Aliquot to avoid repeated freezing and thawing.

Applications

- Western Blot (Transfected lysate)

Western Blot analysis of FKBP8 expression in transfected 293T cell line ([H00023770-T01](#)) by FKBP8 MaxPab polyclonal antibody.

Lane 1: FKBP8 transfected lysate(45.43 KDa).

Lane 2: Non-transfected lysate.

[Protocol Download](#)

Gene Info — FKBP8

Entrez GeneID [23770](#)

GeneBank Accession# [NM_012181](#)

Protein Accession# [NP_036313.3](#)

Gene Name FKBP8

Gene Alias FKBP38, FKBP38

Gene Description FK506 binding protein 8, 38kDa

Omim ID [604840](#)

Gene Ontology [Hyperlink](#)

Gene Summary The protein encoded by this gene is a member of the immunophilin protein family, which play a role in immunoregulation and basic cellular processes involving protein folding and trafficking. Unlike the other members of the family, this encoded protein does not seem to have PPlase/rotamase activity. It may have a role in neurons associated with memory function. [provided by RefSeq]

Other Designations FK506 binding protein 8 (38kD)|FK506-binding protein 8|FK506-binding protein 8 (38kD)