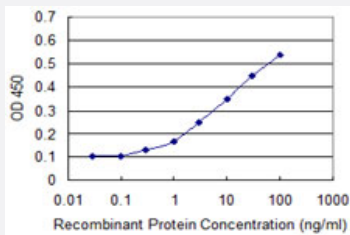


PRKD3 monoclonal antibody (M01), clone 4G7

Catalog # H00023683-M01

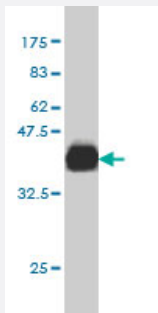
Size 100 ug

Applications



Sandwich ELISA (Recombinant protein)

Detection limit for recombinant GST tagged PRKD3 is approximately 1ng/ml as a capture antibody.



Western Blot detection against Immunogen (36.63 KDa) .

Specification

Product Description

Mouse monoclonal antibody raised against a partial recombinant PRKD3.

Immunogen

PRKD3 (AAH30706, 1 a.a. ~ 100 a.a) partial recombinant protein with GST tag. MW of the GST tag alone is 26 KDa.

Sequence

MSANNSPPSAQKSVLPTAIPAVLPAASPCSSPKTGLSARLSNGSFSAPSLTNSRGSVHTVSFLLQ
IGLTRESVTIEAQELSLSAVKDLVCSIMYQKFPEC

Host

Mouse

Reactivity

Human

Interspecies Antigen Sequence	Mouse (94); Rat (94)
Isotype	IgG2a Kappa
Quality Control Testing	Antibody Reactive Against Recombinant Protein. Western Blot detection against Immunogen (36.63 KDa) .
Storage Buffer	In 1x PBS, pH 7.4
Storage Instruction	Store at -20°C or lower. Aliquot to avoid repeated freezing and thawing.

Applications

- Western Blot (Recombinant protein)

[Protocol Download](#)

- Sandwich ELISA (Recombinant protein)

Detection limit for recombinant GST tagged PRKD3 is approximately 1ng/ml as a capture antibody.

[Protocol Download](#)

- ELISA

Gene Info — PRKD3

Entrez GeneID	23683
GeneBank Accession#	BC030706
Protein Accession#	AAH30706
Gene Name	PRKD3
Gene Alias	EPK2, PKC-NU, PKD3, PRKCN, nPKC-NU
Gene Description	protein kinase D3
Omim ID	607077
Gene Ontology	Hyperlink

Gene Summary

Protein kinase C (PKC) is a family of serine- and threonine-specific protein kinases that can be activated by calcium and the second messenger diacylglycerol. PKC family members phosphorylate a wide variety of protein targets and are known to be involved in diverse cellular signaling pathways. PKC family members also serve as major receptors for phorbol esters, a class of tumor promoters. Each member of the PKC family has a specific expression profile and is believed to play a distinct role. The protein encoded by this gene is one of the PKC family members. This kinase can be activated rapidly by the agonists of G protein-coupled receptors. It resides in both cytoplasm and nucleus, and its nuclear accumulation is found to be dramatically enhanced in response to its activation. This kinase can also be activated after B-cell antigen receptor (BCR) engagement, which requires intact phospholipase C gamma and the involvement of other PKC family members. [provided by RefSeq]

Other Designations

OTTHUMP00000126953|protein kinase C, nuclear|protein kinase EPK2|protein-serine/threonine kinase

Publication Reference

- [Pharmacologic reversion of epigenetic silencing of the PRKD1 promoter blocks breast tumor cell invasion and metastasis.](#)

Borges S, Doppler H, Perez EA, Andorfer CA, Sun Z, Anastasiadis PZ, Thompson EA, Geiger XJ, Storz P.

Breast Cancer Research 2013 Aug; 15(2):R66.

Application: WB-Ce, Human, MCF-10A, MCF-7, MDA-MB-231, MDA-MB-468, T47D, BT-20, ZR-75-1, BT-474 cells