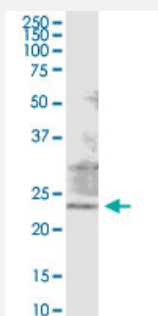


# RAB38 (Human) IP-WB Antibody Pair

Catalog # H00023682-PW2

Size 1 Set

## Applications



Immunoprecipitation of RAB38 transfected lysate using rabbit polyclonal anti-RAB38 and Protein A Magnetic Bead ([U0007](#)), and immunoblotted with mouse purified polyclonal anti-RAB38.

## Specification

<b>Product Description</b>	This IP-WB antibody pair set comes with one antibody for immunoprecipitation and another to detect the precipitated protein in western blot.
<b>Reactivity</b>	Human
<b>Interspecies Antigen Sequence</b>	Mouse (97); Rat (96)
<b>Quality Control Testing</b>	Immunoprecipitation-Western Blot (IP-WB) Immunoprecipitation of RAB38 transfected lysate using rabbit polyclonal anti-RAB38 and Protein A Magnetic Bead ( <a href="#">U0007</a> ), and immunoblotted with mouse purified polyclonal anti-RAB38.
<b>Supplied Product</b>	Antibody pair set content: 1. Antibody pair for IP: rabbit polyclonal anti-RAB38 (300 ul) 2. Antibody pair for WB: mouse purified polyclonal anti-RAB38 (50 ug)
<b>Storage Instruction</b>	Store reagents of the antibody pair set at -20°C or lower. Please aliquot to avoid repeated freeze thaw cycle. Reagents should be returned to -20°C storage immediately after use.

## Applications

- Immunoprecipitation-Western Blot

[Protocol Download](#)

## Gene Info — RAB38

Entrez GeneID	<a href="#">23682</a>
Gene Name	RAB38
Gene Alias	NY-MEL-1, rrGTPbp
Gene Description	RAB38, member RAS oncogene family
Omim ID	<a href="#">606281</a>
Gene Ontology	<a href="#">Hyperlink</a>
Gene Summary	O
Other Designations	Rab-related GTP-binding protein