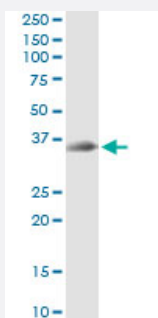


STX12 (Human) IP-WB Antibody Pair

Catalog # H00023673-PW2

Size 1 Set

Applications



Immunoprecipitation of STX12 transfected lysate using mouse monoclonal anti-STX12 and Protein A Magnetic Bead ([U0007](#)), and immunoblotted with rabbit polyclonal anti-STX12.

Specification

Product Description

This IP-WB antibody pair set comes with one antibody for immunoprecipitation and another to detect the precipitated protein in western blot.

Reactivity

Human

Quality Control Testing

Immunoprecipitation-Western Blot (IP-WB)

Immunoprecipitation of STX12 transfected lysate using mouse monoclonal anti-STX12 and Protein A Magnetic Bead ([U0007](#)), and immunoblotted with rabbit polyclonal anti-STX12.

Supplied Product

Antibody pair set content:

1. Antibody pair for IP: mouse monoclonal anti-STX12 (300 ug)
2. Antibody pair for WB: rabbit polyclonal anti-STX12 (50 ul)

Storage Instruction

Store reagents of the antibody pair set at -20°C or lower. Please aliquot to avoid repeated freeze thaw cycle. Reagents should be returned to -20°C storage immediately after use.

Applications

- Immunoprecipitation-Western Blot

[Protocol Download](#)

Gene Info — STX12

Entrez GeneID	23673
Gene Name	STX12
Gene Alias	MGC51957, STX13, STX14
Gene Description	syntaxin 12
Omim ID	606892
Gene Ontology	Hyperlink
Other Designations	OTTHUMP00000003845

Pathway

- [SNARE interactions in vesicular transport](#)