

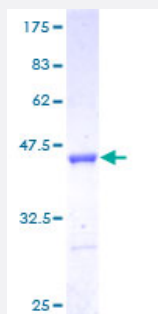
Full-Length

LSM5 (Human) Recombinant Protein (P01)

Catalog # H00023658-P01

Size 25 ug, 10 ug

Applications



Specification

Product Description	Human LSM5 full-length ORF (AAH05938, 1 a.a. - 91 a.a.) recombinant protein with GST-tag at N-terminal.
Sequence	MAANATTNPSQLLPLELVDKCIGSRIHVMKSDKEVGTLLGFDDFVNMVLEDVTEFEITPEGRRITK LDQILLNGNNITMLVPGGEGPEV
Host	Wheat Germ (in vitro)
Theoretical MW (kDa)	35.75
Preparation Method	in vitro wheat germ expression system
Purification	Glutathione Sepharose 4 Fast Flow
Quality Control Testing	12.5% SDS-PAGE Stained with Coomassie Blue.
Storage Buffer	50 mM Tris-HCl, 10 mM reduced Glutathione, pH=8.0 in the elution buffer.
Storage Instruction	Store at -80°C. Aliquot to avoid repeated freezing and thawing.
Note	Best use within three months from the date of receipt of this protein.

Applications

- Enzyme-linked Immunoabsorbent Assay
- Western Blot (Recombinant protein)
- Antibody Production
- Protein Array

Gene Info — LSM5

Entrez GeneID [23658](#)

GeneBank Accession# [BC005938](#)

Protein Accession# [AAH05938](#)

Gene Name LSM5

Gene Alias FLJ12710, YER146W

Gene Description LSM5 homolog, U6 small nuclear RNA associated (S. cerevisiae)

Omim ID [607285](#)

Gene Ontology [Hyperlink](#)

Gene Summary Sm-like proteins were identified in a variety of organisms based on sequence homology with the Sm protein family (see SNRPD2; MIM 601061). Sm-like proteins contain the Sm sequence motif, which consists of 2 regions separated by a linker of variable length that folds as a loop. The Sm-like proteins are thought to form a stable heteromer present in tri-snRNP particles, which are important for pre-mRNA splicing.[supplied by OMIM]

Other Designations LSM5 homolog, U6 small nuclear RNA associated|U6 snRNA-associated Sm-like protein

Pathway

- [RNA degradation](#)