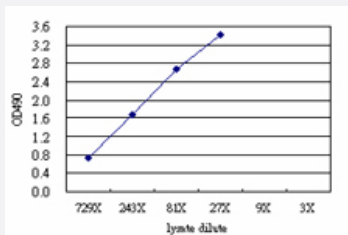


# POLA2 (Human) Matched Antibody Pair

Catalog # H00023649-AP51

Size 1 Set

## Applications



Sandwich ELISA detection sensitivity ranging from approximately 729x to 3x dilution of the POLA2 293T overexpression lysate (non-denatured).

## Specification

<b>Product Description</b>	This antibody pair set comes with a matched antibody pair to detect and quantify the protein level of human POLA2.
<b>Reactivity</b>	Human
<b>Interspecies Antigen Sequence</b>	Mouse (83); Rat (84)
<b>Quality Control Testing</b>	Standard curve using POLA2 293T overexpression lysate (non-denatured) as an analyte. Sandwich ELISA detection sensitivity ranging from approximately 729x to 3x dilution of the POLA2 293T overexpression lysate (non-denatured).
<b>Supplied Product</b>	Antibody pair set content: 1. Capture antibody: mouse monoclonal anti-POLA2 (100 ug) 2. Detection antibody: rabbit purified polyclonal anti-POLA2 (50 ug) *Reagents are sufficient for at least 3-5 x 96 well plates using recommended protocols.
<b>Storage Instruction</b>	Store reagents of the antibody pair set at -20°C or lower. Please aliquot to avoid repeated freeze thaw cycle. Reagents should be returned to -20°C storage immediately after use.

## Applications

- [ELISA Pair \(Transfected lysate\)](#)

[Protocol Download](#)

## Gene Info — POLA2

Entrez GeneID	<a href="#">23649</a>
Gene Name	POLA2
Gene Alias	FLJ21662, FLJ37250
Gene Description	polymerase (DNA directed), alpha 2 (70kD subunit)
Gene Ontology	<a href="#">Hyperlink</a>
Gene Summary	O
Other Designations	polymerase (DNA-directed), alpha (70kD)

## Pathway

- [DNA replication](#)
- [Metabolic pathways](#)
- [Purine metabolism](#)
- [Pyrimidine metabolism](#)

## Disease

- [Kidney Failure](#)
- [Urinary Bladder Neoplasms](#)