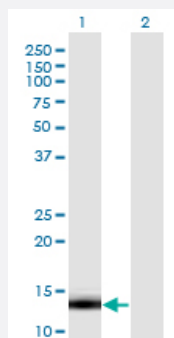


LDOC1 monoclonal antibody (M13), clone 3E5

Catalog # H00023641-M13

Size 100 ug

Applications

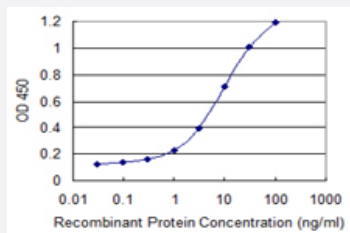


Western Blot (Transfected lysate)

Western Blot analysis of LDOC1 expression in transfected 293T cell line by LDOC1 monoclonal antibody (M13), clone 3E5.

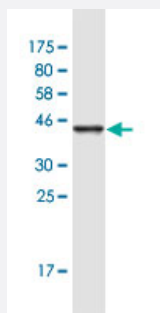
Lane 1: LDOC1 transfected lysate (17 KDa).

Lane 2: Non-transfected lysate.



Sandwich ELISA (Recombinant protein)

Detection limit for recombinant GST tagged LDOC1 is 0.1 ng/ml as a capture antibody.



Western Blot detection against Immunogen (43.4 KDa) .

Specification

Product Description

Mouse monoclonal antibody raised against a full-length recombinant LDOC1.

Immunogen	LDOC1 (NP_036449.1, 1 a.a. ~ 146 a.a) full-length recombinant protein with GST tag. MW of the GST tag alone is 26 KDa.
Sequence	MVDELVLLHALLMRHRALSIENSQLMEQLRLLVCERASLLRQVRPPSCPVPFPETFNGESSRLPEFIVQTASYMLVNENRFCNDAMKVAFLISLLTGEAEWVVPYIEMDSPILGDYRAFLDEMKQCFGWDDDEDDDDDEEEEDDY
Host	Mouse
Reactivity	Human
Interspecies Antigen Sequence	Mouse (73)
Isotype	IgG2a Kappa
Quality Control Testing	Antibody Reactive Against Recombinant Protein. Western Blot detection against Immunogen (43.4 KDa) .
Storage Buffer	In 1x PBS, pH 7.4
Storage Instruction	Store at -20°C or lower. Aliquot to avoid repeated freezing and thawing.

Applications

- Western Blot (Transfected lysate)

Western Blot analysis of LDOC1 expression in transfected 293T cell line by LDOC1 monoclonal antibody (M13), clone 3E5.

Lane 1: LDOC1 transfected lysate(17 KDa).

Lane 2: Non-transfected lysate.

[Protocol Download](#)

- Western Blot (Recombinant protein)

[Protocol Download](#)

- Sandwich ELISA (Recombinant protein)

Detection limit for recombinant GST tagged LDOC1 is 0.1 ng/ml as a capture antibody.

[Protocol Download](#)

- ELISA

Gene Info — LDOC1

Entrez GeneID	23641
GeneBank Accession#	NM_012317.2
Protein Accession#	NP_036449.1
Gene Name	LDOC1
Gene Alias	BCUR1, Mar7, Mart7
Gene Description	leucine zipper, down-regulated in cancer 1
Omim ID	300402
Gene Ontology	Hyperlink
Gene Summary	<p>The protein encoded by this gene contains a leucine zipper-like motif and a proline-rich region that shares marked similarity with an SH3-binding domain. The protein localizes to the nucleus and is down-regulated in some cancer cell lines. It is thought to regulate the transcriptional response mediated by the nuclear factor kappa B (NF-kappaB). The gene has been proposed as a tumor suppressor gene whose protein product may have an important role in the development and/or progression of some cancers. [provided by RefSeq]</p>
Other Designations	OTTHUMP00000024174 breast cancer, up-regulated 1