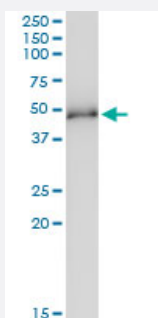


# MKRN2 (Human) IP-WB Antibody Pair

Catalog # H00023609-PW1

Size 1 Set

## Applications



Immunoprecipitation of MKRN2 transfected lysate using rabbit polyclonal anti-MKRN2 and Protein A Magnetic Bead ([U0007](#)), and immunoblotted with mouse purified polyclonal anti-MKRN2.

## Specification

<b>Product Description</b>	This IP-WB antibody pair set comes with one antibody for immunoprecipitation and another to detect the precipitated protein in western blot.
<b>Reactivity</b>	Human
<b>Interspecies Antigen Sequence</b>	Mouse (88); Rat (88)
<b>Quality Control Testing</b>	Immunoprecipitation-Western Blot (IP-WB) Immunoprecipitation of MKRN2 transfected lysate using rabbit polyclonal anti-MKRN2 and Protein A Magnetic Bead ( <a href="#">U0007</a> ), and immunoblotted with mouse purified polyclonal anti-MKRN2.
<b>Supplied Product</b>	Antibody pair set content: 1. Antibody pair for IP: rabbit polyclonal anti-MKRN2 (300 ul) 2. Antibody pair for WB: mouse purified polyclonal anti-MKRN2 (50 ug)
<b>Storage Instruction</b>	Store reagents of the antibody pair set at -20°C or lower. Please aliquot to avoid repeated freeze thaw cycle. Reagents should be returned to -20°C storage immediately after use.

## Applications

- Immunoprecipitation-Western Blot

[Protocol Download](#)

## Gene Info — MKRN2

**Entrez GeneID** [23609](#)

**Gene Name** MKRN2

**Gene Alias** HSPC070, RNF62

**Gene Description** makorin ring finger protein 2

**Omim ID** [608426](#)

**Gene Ontology** [Hyperlink](#)

**Gene Summary** Members of the makorin family, including MKRN2, have a characteristic zinc finger composition that suggests that they are ribonucleoproteins (Gray et al., 2001 [PubMed 11597136]).[supplied by OMIM]

**Other Designations** -

## Disease

- [Disease Progression](#)
- [Disease Susceptibility](#)
- [HIV Infections](#)