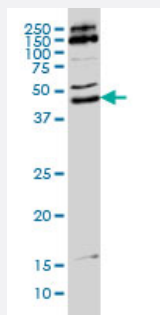


MKRN2 monoclonal antibody (M01), clone 5F8

Catalog # H00023609-M01

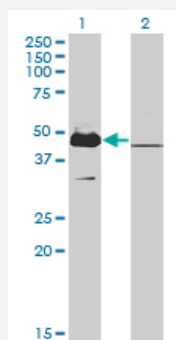
Size 100 ug

Applications



Western Blot (Cell lysate)

MKRN2 monoclonal antibody (M01), clone 5F8 Western Blot analysis of MKRN2 expression in HeLa S3 NE (Cat # L013V3).

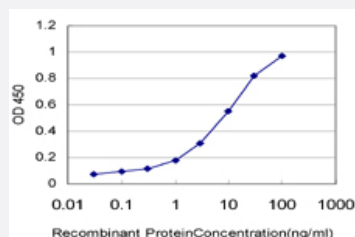


Western Blot (Transfected lysate)

Western Blot analysis of MKRN2 expression in transfected 293T cell line by MKRN2 monoclonal antibody (M01), clone 5F8.

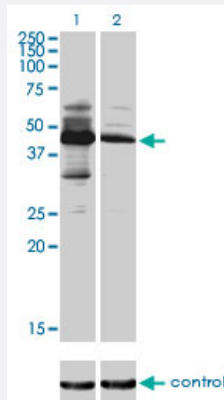
Lane 1: MKRN2 transfected lysate(46.9 KDa).

Lane 2: Non-transfected lysate.



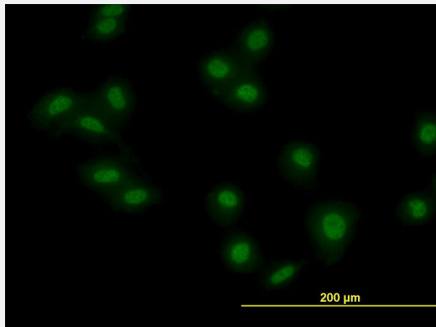
Sandwich ELISA (Recombinant protein)

Detection limit for recombinant GST tagged MKRN2 is approximately 0.1ng/ml as a capture antibody.



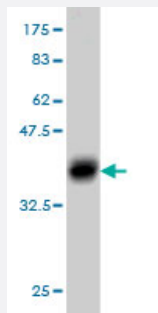
RNAi Knockdown (Antibody validated)

Western blot analysis of MKRN2 over-expressed 293 cell line, cotransfected with MKRN2 Validated Chimera RNAi (Cat # H00023609-R01V) (Lane 2) or non-transfected control (Lane 1). Blot probed with MKRN2 monoclonal antibody (M01), clone 5F8 (Cat # H00023609-M01). GAPDH (36.1 kDa) used as specificity and loading control.



Immunofluorescence

Immunofluorescence of monoclonal antibody to MKRN2 on HeLa cell. [antibody concentration 10 ug/ml]



Western Blot detection against Immunogen (36.63 KDa) .

Specification

Product Description	Mouse monoclonal antibody raised against a partial recombinant MKRN2.
Immunogen	MKRN2 (NP_054879, 317 a.a. ~ 415 a.a) partial recombinant protein with GST tag. MW of the GST tag alone is 26 KDa.
Sequence	AFKQGMGKKACKYFEQGKGTCFPGSKCLYRHAYPDGRLAEPEKPRKQLSSQGTVRFFNSVRLWDFIENRESRHVPNNEDVDMTELGDLMHLSGVESSE
Host	Mouse
Reactivity	Human
Interspecies Antigen Sequence	Mouse (88); Rat (88)

Isotype	IgG1 Kappa
Quality Control Testing	Antibody Reactive Against Recombinant Protein. Western Blot detection against Immunogen (36.63 KDa) .
Storage Buffer	In 1x PBS, pH 7.4
Storage Instruction	Store at -20°C or lower. Aliquot to avoid repeated freezing and thawing.

Applications

- Western Blot (Cell lysate)

MKRN2 monoclonal antibody (M01), clone 5F8 Western Blot analysis of MKRN2 expression in Hela S3 NE (Cat # L013V3).

[Protocol Download](#)

- Western Blot (Transfected lysate)

Western Blot analysis of MKRN2 expression in transfected 293T cell line by MKRN2 monoclonal antibody (M01), clone 5F8.

Lane 1: MKRN2 transfected lysate(46.9 KDa).

Lane 2: Non-transfected lysate.

[Protocol Download](#)

- Western Blot (Recombinant protein)

[Protocol Download](#)

- Sandwich ELISA (Recombinant protein)

Detection limit for recombinant GST tagged MKRN2 is approximately 0.1ng/ml as a capture antibody.

[Protocol Download](#)

- ELISA

- RNAi Knockdown (Antibody validated)

Western blot analysis of MKRN2 over-expressed 293 cell line, cotransfected with MKRN2 Validated Chimera RNAi (Cat # H00023609-R01V) (Lane 2) or non-transfected control (Lane 1). Blot probed with MKRN2 monoclonal antibody (M01), clone 5F8 (Cat # H00023609-M01). GAPDH (36.1 kDa) used as specificity and loading control.

[Protocol Download](#)

- Immunofluorescence

Immunofluorescence of monoclonal antibody to MKRN2 on HeLa cell. [antibody concentration 10 ug/ml]

Gene Info — MKRN2

Entrez GeneID [23609](#)**GeneBank Accession#** [NM_014160](#)**Protein Accession#** [NP_054879](#)**Gene Name** MKRN2**Gene Alias** HSPC070, RNF62**Gene Description** makorin ring finger protein 2**Omim ID** [608426](#)**Gene Ontology** [Hyperlink](#)

Gene Summary Members of the makorin family, including MKRN2, have a characteristic zinc finger composition that suggests that they are ribonucleoproteins (Gray et al., 2001 [PubMed 11597136]).[supplied by OMIM]

Other Designations -

Disease

- [Disease Progression](#)
- [Disease Susceptibility](#)
- [HIV Infections](#)