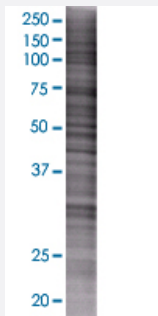


CLEC5A 293T Cell Transient Overexpression Lysate(Denatured)

Catalog # H00023601-T01

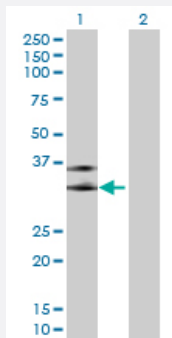
Size 100 uL

Applications



SDS-PAGE Gel

CLEC5A transfected lysate.



Western Blot

Lane 1: CLEC5A transfected lysate (20.79 KDa)

Lane 2: Non-transfected lysate.

Specification

Transfected Cell Line	293T
Plasmid	pCMV-CLEC5A full-length
Host	Human
Theoretical MW (kDa)	20.79
Interspecies Antigen Sequence	Mouse (70); Rat (70)

Quality Control Testing

Transient overexpression cell lysate was tested with Anti-CLEC5A antibody ([H00023601-B01](#)) by Western Blots.
SDS-PAGE Gel
CLEC5A transfected lysate.
Western Blot
Lane 1: CLEC5A transfected lysate (20.79 KDa)
Lane 2: Non-transfected lysate.

Storage Buffer

1X Sample Buffer (50 mM Tris-HCl, 2% SDS, 10% glycerol, 300 mM 2-mercaptoethanol, 0.01% Bromophenol blue)

Storage Instruction

Store at -80°C. Aliquot to avoid repeated freezing and thawing.

Applications

- Western Blot

Gene Info — CLEC5A

Entrez GeneID[23601](#)**GeneBank Accession#**[NM_013252.2](#)**Protein Accession#**[NP_037384.1](#)**Gene Name**

CLEC5A

Gene Alias

CLECSF5, MDL-1, MDL1, MGC138304

Gene Description

C-type lectin domain family 5, member A

Omim ID[604987](#)**Gene Ontology**[Hyperlink](#)**Gene Summary**

This gene encodes a member of the C-type lectin/C-type lectin-like domain (CTL/CTLD) superfamily. Members of this family share a common protein fold and have diverse functions, such as cell adhesion, cell-cell signalling, glycoprotein turnover, and roles in inflammation and immune response. The encoded type II transmembrane protein interacts with dnax-activation protein 12 and may play a role in cell activation. Alternative splice variants have been described but their full-length sequence has not been determined. [provided by RefSeq]

Other Designations

C-type (calcium dependent, carbohydrate-recognition domain) lectin, superfamily member 5|C-type lectin, superfamily member 5|myeloid DAP12-associating lectin-1