

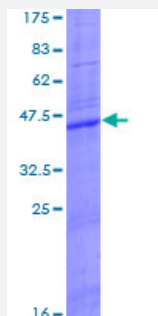
Full-Length

CLEC5A (Human) Recombinant Protein (P01)

Catalog # H00023601-P01

Size 25 ug, 10 ug

Applications



Specification

Product Description	Human CLEC5A full-length ORF (NP_037384.1, 1 a.a. - 188 a.a.) recombinant protein with GST-tag at N-terminal.
Sequence	MNWHMIISGLIVVVLKVVGMTLFLLYFPQIFNKSNDGFTTTRS YGTVSQIFGSSSPSPNGFITRSYG TVCPKDWEFYQARCFLLSTSESSWNESRDFCKGKGSTLAMNTPEKLKFLQDITDAEKYFIGLIYH REEKRWRWINNSVFNGNVTNQNFNCATIGLTKTFDAASCDISYRRICEKNAK
Host	Wheat Germ (in vitro)
Theoretical MW (kDa)	47.9
Interspecies Antigen Sequence	Mouse (70); Rat (70)
Preparation Method	in vitro wheat germ expression system
Purification	Glutathione Sepharose 4 Fast Flow
Quality Control Testing	12.5% SDS-PAGE Stained with Coomassie Blue.
Storage Buffer	50 mM Tris-HCl, 10 mM reduced Glutathione, pH=8.0 in the elution buffer.
Storage Instruction	Store at -80°C. Aliquot to avoid repeated freezing and thawing.

Note

Best use within three months from the date of receipt of this protein.

Applications

- Enzyme-linked Immunoabsorbent Assay
- Western Blot (Recombinant protein)
- Antibody Production
- Protein Array

Gene Info — CLEC5A

Entrez GeneID [23601](#)

GeneBank Accession# [NM_013252.2](#)

Protein Accession# [NP_037384.1](#)

Gene Name CLEC5A

Gene Alias CLECSF5, MDL-1, MDL1, MGC138304

Gene Description C-type lectin domain family 5, member A

Omim ID [604987](#)

Gene Ontology [Hyperlink](#)

Gene Summary This gene encodes a member of the C-type lectin/C-type lectin-like domain (CTL/CTLD) superfamily. Members of this family share a common protein fold and have diverse functions, such as cell adhesion, cell-cell signalling, glycoprotein turnover, and roles in inflammation and immune response. The encoded type II transmembrane protein interacts with dnax-activation protein 12 and may play a role in cell activation. Alternative splice variants have been described but their full-length sequence has not been determined. [provided by RefSeq]

Other Designations C-type (calcium dependent, carbohydrate-recognition domain) lectin, superfamily member 5|C-type lectin, superfamily member 5|myeloid DAP12-associating lectin-1