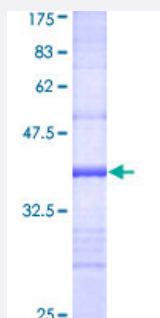


ORC3L (Human) Recombinant Protein (Q01)

Catalog # H00023595-Q01

Size 25 ug, 10 ug

Applications



Specification

| | |
|--------------------------------------|--|
| Product Description | Human ORC3L partial ORF (AAH35494, 602 a.a. - 711 a.a.) recombinant protein with GST-tag at N-terminal. |
| Sequence | ALNNPYYYLKNEALKSEEGCIPNIAPDICIAYKLHLECSRLINLVDWSEAFATVVTAAEKMDANSATSEEMNEIIHARFIRAVSELELLGFIKPTKQKTDHVARLTWGGC |
| Host | Wheat Germ (in vitro) |
| Theoretical MW (kDa) | 37.73 |
| Interspecies Antigen Sequence | Mouse (79); Rat (82) |
| Preparation Method | in vitro wheat germ expression system |
| Purification | Glutathione Sepharose 4 Fast Flow |
| Quality Control Testing | 12.5% SDS-PAGE Stained with Coomassie Blue. |
| Storage Buffer | 50 mM Tris-HCl, 10 mM reduced Glutathione, pH=8.0 in the elution buffer. |
| Storage Instruction | Store at -80°C. Aliquot to avoid repeated freezing and thawing. |
| Note | Best use within three months from the date of receipt of this protein. |

Applications

- Enzyme-linked Immunoabsorbent Assay
- Western Blot (Recombinant protein)
- Antibody Production
- Protein Array

Gene Info — ORC3L

Entrez GeneID [23595](#)

GeneBank Accession# [BC035494](#)

Protein Accession# [AAH35494](#)

Gene Name ORC3L

Gene Alias LAT, LATHEO, ORC3

Gene Description origin recognition complex, subunit 3-like (yeast)

Omim ID [604972](#)

Gene Ontology [Hyperlink](#)

Gene Summary The origin recognition complex (ORC) is a highly conserved six subunits protein complex essential for the initiation of the DNA replication in eukaryotic cells. Studies in yeast demonstrated that ORC binds specifically to origins of replication and serves as a platform for the assembly of additional initiation factors such as Cdc6 and Mcm proteins. The protein encoded by this gene is a subunit of the ORC complex. Studies of a similar gene in Drosophila suggested a possible role of this protein in neuronal proliferation and olfactory memory. Alternatively spliced transcript variants encoding distinct isoforms have been reported for this gene. [provided by RefSeq]

Other Designations OTTHUMP00000016835|OTTHUMP00000040611|homolog of latheo, Drosophila|origin recognition complex, subunit 3

Pathway

- [Cell cycle](#)

Disease

- [Genetic Predisposition to Disease](#)