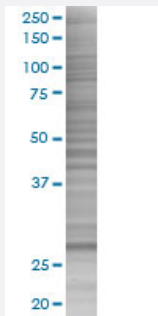


# ORC6L 293T Cell Transient Overexpression Lysate(Denatured)

Catalog # H00023594-T02

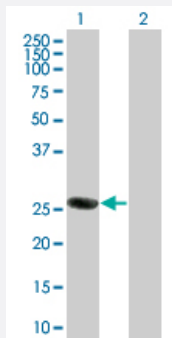
Size 100 uL

## Applications



### SDS-PAGE Gel

ORC6L transfected lysate.



### Western Blot

Lane 1: ORC6L transfected lysate ( 27.83 KDa)

Lane 2: Non-transfected lysate.

## Specification

Transfected Cell Line	293T
Plasmid	pCMV-ORC6L full-length
Host	Human
Theoretical MW (kDa)	27.83
Interspecies Antigen Sequence	Mouse (74); Rat (70)

**Quality Control Testing**

Transient overexpression cell lysate was tested with Anti-ORC6L antibody ([H00023594-B02](#)) by Western Blots.  
SDS-PAGE Gel  
ORC6L transfected lysate.  
Western Blot  
Lane 1: ORC6L transfected lysate ( 27.83 KDa)  
Lane 2: Non-transfected lysate.

**Storage Buffer**

1X Sample Buffer (50 mM Tris-HCl, 2% SDS, 10% glycerol, 300 mM 2-mercaptoethanol, 0.01% Bromophenol blue)

**Storage Instruction**

Store at -80°C. Aliquot to avoid repeated freezing and thawing.

## Applications

- Western Blot

## Gene Info — ORC6L

**Entrez GeneID**[23594](#)**GeneBank Accession#**[NM\\_014321](#)**Protein Accession#**[NP\\_055136](#)**Gene Name**

ORC6L

**Gene Alias**

ORC6

**Gene Description**

origin recognition complex, subunit 6 like (yeast)

**Omim ID**[607213](#)**Gene Ontology**[Hyperlink](#)**Gene Summary**

The origin recognition complex (ORC) is a highly conserved six subunit protein complex essential for the initiation of the DNA replication in eukaryotic cells. Studies in yeast demonstrated that ORC binds specifically to origins of replication and serves as a platform for the assembly of additional initiation factors such as Cdc6 and Mcm proteins. The protein encoded by this gene is a subunit of the ORC complex. It has been shown that this protein and ORC1L are loosely associated with the core complex consisting of ORC2L, -3L, -4L and -5L. Gene silencing studies with small interfering RNA demonstrated that this protein plays an essential role in coordinating chromosome replication and segregation with cytokinesis. [provided by RefSeq]

**Other Designations**

origin recognition complex subunit 6|origin recognition complex, subunit 6 homolog-like

## Pathway

- [Cell cycle](#)