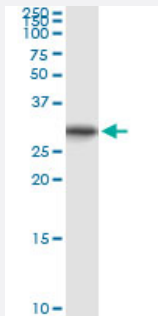


# ORC6L (Human) IP-WB Antibody Pair

Catalog # H00023594-PW1

Size 1 Set

## Applications



Immunoprecipitation of ORC6L transfected lysate using rabbit polyclonal anti-ORC6L and Protein A Magnetic Bead ([U0007](#)), and immunoblotted with mouse purified polyclonal anti-ORC6L.

## Specification

<b>Product Description</b>	This IP-WB antibody pair set comes with one antibody for immunoprecipitation and another to detect the precipitated protein in western blot.
<b>Reactivity</b>	Human
<b>Interspecies Antigen Sequence</b>	Mouse (74); Rat (70)
<b>Quality Control Testing</b>	Immunoprecipitation-Western Blot (IP-WB) Immunoprecipitation of ORC6L transfected lysate using rabbit polyclonal anti-ORC6L and Protein A Magnetic Bead ( <a href="#">U0007</a> ), and immunoblotted with mouse purified polyclonal anti-ORC6L.
<b>Supplied Product</b>	Antibody pair set content: 1. Antibody pair for IP: rabbit polyclonal anti-ORC6L (300 ul) 2. Antibody pair for WB: mouse purified polyclonal anti-ORC6L (50 ug)
<b>Storage Instruction</b>	Store reagents of the antibody pair set at -20°C or lower. Please aliquot to avoid repeated freeze thaw cycle. Reagents should be returned to -20°C storage immediately after use.

## Applications

- Immunoprecipitation-Western Blot

[Protocol Download](#)

## Gene Info — ORC6L

**Entrez GeneID** [23594](#)

**Gene Name** ORC6L

**Gene Alias** ORC6

**Gene Description** origin recognition complex, subunit 6 like (yeast)

**Omim ID** [607213](#)

**Gene Ontology** [Hyperlink](#)

**Gene Summary** The origin recognition complex (ORC) is a highly conserved six subunit protein complex essential for the initiation of the DNA replication in eukaryotic cells. Studies in yeast demonstrated that ORC binds specifically to origins of replication and serves as a platform for the assembly of additional initiation factors such as Cdc6 and Mcm proteins. The protein encoded by this gene is a subunit of the ORC complex. It has been shown that this protein and ORC1L are loosely associated with the core complex consisting of ORC2L, -3L, -4L and -5L. Gene silencing studies with small interfering RNA demonstrated that this protein plays an essential role in coordinating chromosome replication and segregation with cytokinesis. [provided by RefSeq]

**Other Designations** origin recognition complex subunit 6|origin recognition complex, subunit 6 homolog-like

## Pathway

- [Cell cycle](#)