

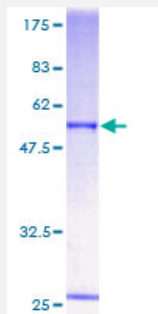
Full-Length

ORC6L (Human) Recombinant Protein (P01)

Catalog # H00023594-P01

Size 25 ug, 10 ug

Applications



Specification

Product Description

Human ORC6L full-length ORF (AAH63565, 1 a.a. - 252 a.a.) recombinant protein with GST-tag at N-terminal.

Sequence

MGSELIGRLAPRLGLAEPDMLRKAEEYLRLSRVKCVGLSARTTETSSAVMCLDLAASWMKCPLD
RAYLIKLSGLNKETYQSCLKSFECLLGLNSNIGIRDLAVQFSCIEAVNMASKILKSYESSLPQTQQVD
LDLSRPLFTSAALLSACKILKLKVDKNKMVATSGVKKAIFDRICKQLEKIGQQVDREPGDVATPPR
KRKKIVVEAPAKEMEKVEEMPHKPQKDEDLTQDYEEWKRKILENAASAQKATAE

Host

Wheat Germ (in vitro)

Theoretical MW (kDa)

53.46

Interspecies Antigen Sequence

Mouse (74); Rat (70)

Preparation Method

[in vitro wheat germ expression system](#)

Purification

Glutathione Sepharose 4 Fast Flow

Quality Control Testing

12.5% SDS-PAGE Stained with Coomassie Blue.

Storage Buffer

50 mM Tris-HCl, 10 mM reduced Glutathione, pH=8.0 in the elution buffer.

Storage Instruction

Store at -80°C. Aliquot to avoid repeated freezing and thawing.

Note

Best use within three months from the date of receipt of this protein.

Applications

- Enzyme-linked Immunoabsorbent Assay
- Western Blot (Recombinant protein)
- Antibody Production
- Protein Array

Gene Info — ORC6L

Entrez GeneID [23594](#)

GeneBank Accession# [BC063565](#)

Protein Accession# [AAH63565](#)

Gene Name ORC6L

Gene Alias ORC6

Gene Description origin recognition complex, subunit 6 like (yeast)

Omim ID [607213](#)

Gene Ontology [Hyperlink](#)

Gene Summary

The origin recognition complex (ORC) is a highly conserved six subunit protein complex essential for the initiation of the DNA replication in eukaryotic cells. Studies in yeast demonstrated that ORC binds specifically to origins of replication and serves as a platform for the assembly of additional initiation factors such as Cdc6 and Mcm proteins. The protein encoded by this gene is a subunit of the ORC complex. It has been shown that this protein and ORC1L are loosely associated with the core complex consisting of ORC2L, -3L, -4L and -5L. Gene silencing studies with small interfering RNA demonstrated that this protein plays an essential role in coordinating chromosome replication and segregation with cytokinesis. [provided by RefSeq]

Other Designations origin recognition complex subunit 6|origin recognition complex, subunit 6 homolog-like

Pathway

- [Cell cycle](#)