

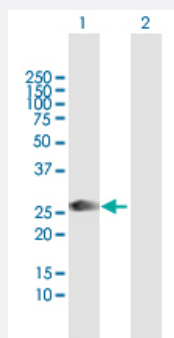
MaxPab®

ORC6L MaxPab rabbit polyclonal antibody (D02)

Catalog # H00023594-D02

Size 100 uL

Applications

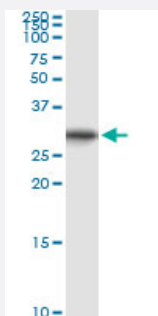


Western Blot (Transfected lysate)

Western Blot analysis of ORC6L expression in transfected 293T cell line ([H00023594-T01](#)) by ORC6L MaxPab polyclonal antibody.

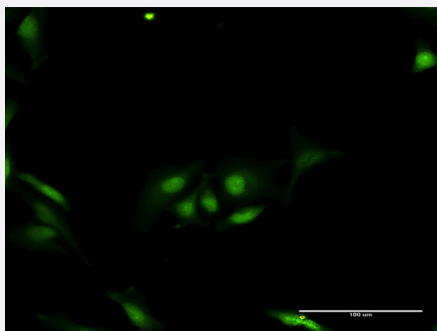
Lane 1: ORC6L transfected lysate(27.83 KDa).

Lane 2: Non-transfected lysate.



Immunoprecipitation

Immunoprecipitation of ORC6L transfected lysate using anti-ORC6L MaxPab rabbit polyclonal antibody and Protein A Magnetic Bead, and immunoblotted with ORC6L purified MaxPab mouse polyclonal antibody (B01P) ([H00023594-B01P](#)).



Immunofluorescence

Immunofluorescence of purified MaxPab antibody to ORC6L on HeLa cell. [antibody concentration 20 ug/ml]

Specification

Product Description

Rabbit polyclonal antibody raised against a full-length human ORC6L protein.

Immunogen	ORC6L (AAH63565.1, 1 a.a. ~ 252 a.a) full-length human protein.
Sequence	MGSELIGRLAPRLGLAEPDMLRKAE EYLRLSRVKCVGLSARTTETSSAVMCLDLAASWMKCPLD RAYLIKLSGLNKETYQSCLKSFECLLGLNSNIGIRDLAVQFSCIEAVNMASKILKSYESSLPQTQQVD LDLSRPLFTSAALLSACKILKLKVDKNKMOVATSGVKKAIFDR LCKQLEKIGQQVDREPGDVATPPR KRKKIVVEAPAKEMEKVEEMPHKPQKDEDLTQDYEEWKRKILENAASAQKATAE
Host	Rabbit
Reactivity	Human
Interspecies Antigen Sequence	Mouse (74); Rat (70)
Quality Control Testing	Antibody reactive against mammalian transfected lysate.
Storage Buffer	No additive
Storage Instruction	Store at -20°C or lower. Aliquot to avoid repeated freezing and thawing.

Applications

- Western Blot (Transfected lysate)

Western Blot analysis of ORC6L expression in transfected 293T cell line ([H00023594-T01](#)) by ORC6L MaxPab polyclonal antibody.

Lane 1: ORC6L transfected lysate(27.83 KDa).

Lane 2: Non-transfected lysate.

[Protocol Download](#)

- Immunoprecipitation

Immunoprecipitation of ORC6L transfected lysate using anti-ORC6L MaxPab rabbit polyclonal antibody and Protein A Magnetic Bead, and immunoblotted with ORC6L purified MaxPab mouse polyclonal antibody (B01P) ([H00023594-B01P](#)).

[Protocol Download](#)

- Immunofluorescence

Immunofluorescence of purified MaxPab antibody to ORC6L on HeLa cell. [antibody concentration 20 ug/ml]

Gene Info — ORC6L

Entrez GeneID [23594](#)

GeneBank Accession# [BC063565.1](#)

Protein Accession#	AAH63565.1
Gene Name	ORC6L
Gene Alias	ORC6
Gene Description	origin recognition complex, subunit 6 like (yeast)
Omim ID	607213
Gene Ontology	Hyperlink
Gene Summary	<p>The origin recognition complex (ORC) is a highly conserved six subunit protein complex essential for the initiation of the DNA replication in eukaryotic cells. Studies in yeast demonstrated that ORC binds specifically to origins of replication and serves as a platform for the assembly of additional initiation factors such as Cdc6 and Mcm proteins. The protein encoded by this gene is a subunit of the ORC complex. It has been shown that this protein and ORC1L are loosely associated with the core complex consisting of ORC2L, -3L, -4L and -5L. Gene silencing studies with small interfering RNA demonstrated that this protein plays an essential role in coordinating chromosome replication and segregation with cytokinesis. [provided by RefSeq]</p>
Other Designations	origin recognition complex subunit 6 origin recognition complex, subunit 6 homolog-like

Pathway

- [Cell cycle](#)