

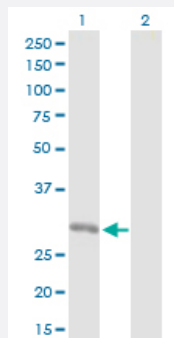
MaxPab®

# ORC6L purified MaxPab rabbit polyclonal antibody (D01P)

Catalog # H00023594-D01P

Size 100 ug

## Applications

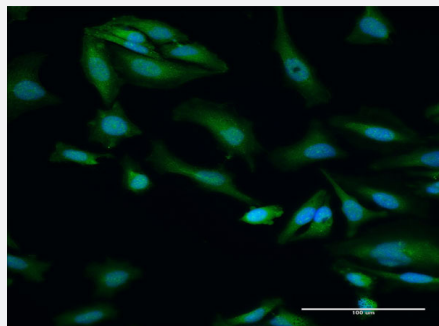


### Western Blot (Transfected lysate)

Western Blot analysis of ORC6L expression in transfected 293T cell line ([H00023594-T03](#)) by ORC6L MaxPab polyclonal antibody.

Lane 1: ORC6L transfected lysate(28.10 KDa).

Lane 2: Non-transfected lysate.



### Immunofluorescence

Immunofluorescence of purified MaxPab antibody to ORC6L on HeLa cell. [antibody concentration 30 ug/ml]

## Specification

### Product Description

Rabbit polyclonal antibody raised against a full-length human ORC6L protein.

### Immunogen

ORC6L (NP\_055136.1, 1 a.a. ~ 252 a.a) full-length human protein.

### Sequence

MGSELIGRLAPRLGLAEPDMLRKAEEYLRLSRVKCVGLSARTTETSSAVMCLDLAASWMKCPLD  
RAYLIKLSGLNKETYQSCLKSFECLLGLNSNIGIRD LAVQFSCIEAVNMASKILKSYESSLPQTQQVD  
LDLSRPLFTSAALLSACKILKLKVDKNKMVATSGVKKAIFDRLCKQLEKIGQQVDREPGDVATPPR  
KRKKIVVEAPAKEMEKVEEMPHKPQKDEDLTQDYEEWKRKILENAASAQKATAE

### Host

Rabbit

### Reactivity

Human

Interspecies Antigen Sequence	Mouse (74); Rat (70)
Quality Control Testing	Antibody reactive against mammalian transfected lysate.
Storage Buffer	In 1x PBS, pH 7.4
Storage Instruction	Store at -20°C or lower. Aliquot to avoid repeated freezing and thawing.

## Applications

- Western Blot (Transfected lysate)

Western Blot analysis of ORC6L expression in transfected 293T cell line ([H00023594-T03](#)) by ORC6L MaxPab polyclonal antibody.

Lane 1: ORC6L transfected lysate(28.10 KDa).

Lane 2: Non-transfected lysate.

[Protocol Download](#)

- Immunofluorescence

Immunofluorescence of purified MaxPab antibody to ORC6L on HeLa cell. [antibody concentration 30 ug/ml]

## Gene Info — ORC6L

Entrez GeneID	<a href="#">23594</a>
GeneBank Accession#	<a href="#">NM_014321</a>
Protein Accession#	<a href="#">NP_055136.1</a>
Gene Name	ORC6L
Gene Alias	ORC6
Gene Description	origin recognition complex, subunit 6 like (yeast)
Omim ID	<a href="#">607213</a>
Gene Ontology	<a href="#">Hyperlink</a>

**Gene Summary**

The origin recognition complex (ORC) is a highly conserved six subunit protein complex essential for the initiation of the DNA replication in eukaryotic cells. Studies in yeast demonstrated that ORC binds specifically to origins of replication and serves as a platform for the assembly of additional initiation factors such as Cdc6 and Mcm proteins. The protein encoded by this gene is a subunit of the ORC complex. It has been shown that this protein and ORC1L are loosely associated with the core complex consisting of ORC2L, -3L, -4L and -5L. Gene silencing studies with small interfering RNA demonstrated that this protein plays an essential role in coordinating chromosome replication and segregation with cytokinesis. [provided by RefSeq]

**Other Designations**

origin recognition complex subunit 6|origin recognition complex, subunit 6 homolog-like

## Pathway

- [Cell cycle](#)