

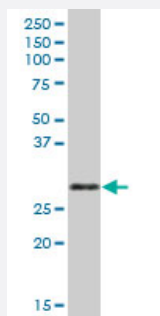
MaxPab®

# ORC6L purified MaxPab mouse polyclonal antibody (B02P)

Catalog # H00023594-B02P

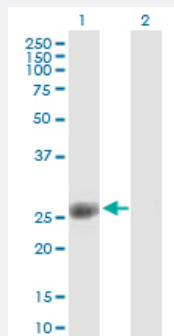
Size 50 ug

## Applications



### Western Blot (Tissue lysate)

ORC6L MaxPab polyclonal antibody. Western Blot analysis of ORC6L expression in human pancreas.

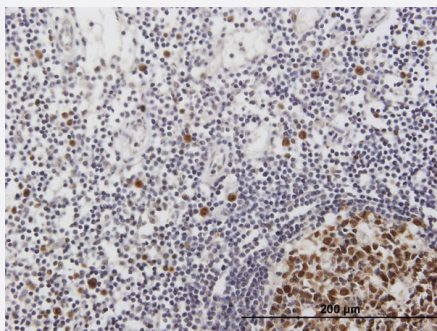


### Western Blot (Transfected lysate)

Western Blot analysis of ORC6L expression in transfected 293T cell line ([H00023594-T02](#)) by ORC6L MaxPab polyclonal antibody.

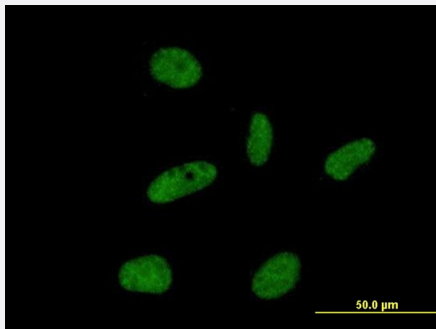
Lane 1: ORC6L transfected lysate(27.72 KDa).

Lane 2: Non-transfected lysate.



### Immunohistochemistry (Formalin/PFA-fixed paraffin-embedded sections)

Immunoperoxidase of purified MaxPab antibody to ORC6L on formalin-fixed paraffin-embedded human lymph node. [antibody concentration 3 ug/ml]



## Immunofluorescence

Immunofluorescence of purified MaxPab antibody to ORC6L on HeLa cell.  
[antibody concentration 10 ug/ml]

## Specification

<b>Product Description</b>	Mouse polyclonal antibody raised against a full-length human ORC6L protein.
<b>Immunogen</b>	ORC6L (NP_055136.1, 1 a.a. ~ 252 a.a) full-length human protein.
<b>Sequence</b>	MGSELIGRLAPRLGLAEPDMLRKAEEYLRLSRVKCVGLSARTTETSSAVMCLDLAASWMKCPLD RAYLIKLSGLNKETYQSCLKSFECLLGLNSNIGIRDLAVQFSCIEAVNMASKILKSYESSLPQTQQVD LDLSRPLFTSAALLSACKILKLKVDKNKMVATSGVKKAIFDRLCKQLEKIGQQVDREPGDVATPPR KRKKIVVEAPAKEMEKVEEMPHKPQKDEDLTQDYEEWKRKILENAASAQKATAE
<b>Host</b>	Mouse
<b>Reactivity</b>	Human
<b>Interspecies Antigen Sequence</b>	Mouse (74); Rat (70)
<b>Quality Control Testing</b>	Antibody reactive against mammalian transfected lysate.
<b>Storage Buffer</b>	In 1x PBS, pH 7.4
<b>Storage Instruction</b>	Store at -20°C or lower. Aliquot to avoid repeated freezing and thawing.

## Applications

- Western Blot (Tissue lysate)

ORC6L MaxPab polyclonal antibody. Western Blot analysis of ORC6L expression in human pancreas.

[Protocol Download](#)

- Western Blot (Transfected lysate)

Western Blot analysis of ORC6L expression in transfected 293T cell line ([H00023594-T02](#)) by ORC6L MaxPab polyclonal antibody.

Lane 1: ORC6L transfected lysate(27.72 KDa).

Lane 2: Non-transfected lysate.

[Protocol Download](#)

- Immunohistochemistry (Formalin/PFA-fixed paraffin-embedded sections)

Immunoperoxidase of purified MaxPab antibody to ORC6L on formalin-fixed paraffin-embedded human lymph node. [antibody concentration 3 ug/ml]

[Protocol Download](#)

- Immunofluorescence

Immunofluorescence of purified MaxPab antibody to ORC6L on HeLa cell. [antibody concentration 10 ug/ml]

## Gene Info — ORC6L

Entrez GeneID [23594](#)

GeneBank Accession# [NM\\_014321](#)

Protein Accession# [NP\\_055136.1](#)

Gene Name ORC6L

Gene Alias ORC6

Gene Description origin recognition complex, subunit 6 like (yeast)

Omim ID [607213](#)

Gene Ontology [Hyperlink](#)

**Gene Summary**

The origin recognition complex (ORC) is a highly conserved six subunit protein complex essential for the initiation of the DNA replication in eukaryotic cells. Studies in yeast demonstrated that ORC binds specifically to origins of replication and serves as a platform for the assembly of additional initiation factors such as Cdc6 and Mcm proteins. The protein encoded by this gene is a subunit of the ORC complex. It has been shown that this protein and ORC1L are loosely associated with the core complex consisting of ORC2L, -3L, -4L and -5L. Gene silencing studies with small interfering RNA demonstrated that this protein plays an essential role in coordinating chromosome replication and segregation with cytokinesis. [provided by RefSeq]

**Other Designations** origin recognition complex subunit 6|origin recognition complex, subunit 6 homolog-like

## Pathway

- [Cell cycle](#)