

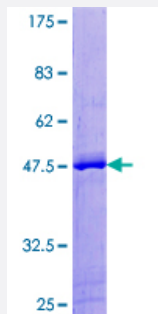
Full-Length

CARHSP1 (Human) Recombinant Protein (P01)

Catalog # H00023589-P01

Size 25 ug, 10 ug

Applications



Specification

Product Description	Human CARHSP1 full-length ORF (NP_001035941.1, 1 a.a. - 147 a.a.) recombinant protein with G ST-tag at N-terminal.
Sequence	MSSEPPPPPPQPPTHQASVGLLDTPRSRERSPSPLRGNVVPSPLPTRRTRTF SATVRASQGPVYK GVCKCFCRSKGHGFITPADGGPDIFLHISDVEGEYVPVEGDEVTYKMCSIPPKNEKLQAVEVVITH LAPGTKHETWSGHVISS
Host	Wheat Germ (in vitro)
Theoretical MW (kDa)	42.3
Interspecies Antigen Sequence	Mouse (96); Rat (97)
Preparation Method	in vitro wheat germ expression system
Purification	Glutathione Sepharose 4 Fast Flow
Quality Control Testing	12.5% SDS-PAGE Stained with Coomassie Blue.
Storage Buffer	50 mM Tris-HCl, 10 mM reduced Glutathione, pH=8.0 in the elution buffer.
Storage Instruction	Store at -80°C. Aliquot to avoid repeated freezing and thawing.

Note

Best use within three months from the date of receipt of this protein.

Applications

- Enzyme-linked Immunoabsorbent Assay
- Western Blot (Recombinant protein)
- Antibody Production
- Protein Array

Gene Info — CARHSP1

Entrez GeneID	23589
GeneBank Accession#	NM_001042476.1
Protein Accession#	NP_001035941.1
Gene Name	CARHSP1
Gene Alias	CRHSP-24, CSDC1, MGC111446
Gene Description	calcium regulated heat stable protein 1, 24kDa
Gene Ontology	Hyperlink
Gene Summary	O
Other Designations	calcium regulated heat stable protein 1 (24kD) calcium-regulated heat-stable protein (24kD) calcium-regulated heat-stable protein 1