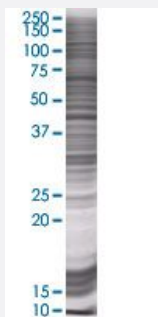


CDC42EP4 293T Cell Transient Overexpression Lysate(Denatured)

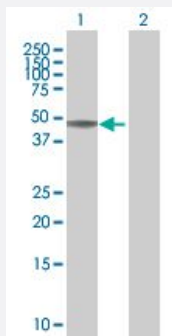
Catalog # H00023580-T01 Size 100 uL

Applications



SDS-PAGE Gel

CDC42EP4 transfected lysate.



Western Blot

Lane 1: CDC42EP4 transfected lysate (39.27 KDa)

Lane 2: Non-transfected lysate.

Specification

Transfected Cell Line	293T
Plasmid	pCMV-CDC42EP4 full-length
Host	Human
Theoretical MW (kDa)	39.27
Interspecies Antigen Sequence	Mouse (78); Rat (77)

Quality Control Testing

Transient overexpression cell lysate was tested with Anti-CDC42EP4 antibody ([H00023580-B01](#)) by Western Blots.
SDS-PAGE Gel
CDC42EP4 transfected lysate.
Western Blot
Lane 1: CDC42EP4 transfected lysate (39.27 KDa)
Lane 2: Non-transfected lysate.

Storage Buffer

1X Sample Buffer (50 mM Tris-HCl, 2% SDS, 10% glycerol, 300 mM 2-mercaptoethanol, 0.01% Bromophenol blue)

Storage Instruction

Store at -80°C. Aliquot to avoid repeated freezing and thawing.

Applications

- Western Blot

Gene Info — CDC42EP4

Entrez GeneID

[23580](#)

GeneBank Accession#

[NM_012121.4](#)

Protein Accession#

[NP_036253.2](#)

Gene Name

CDC42EP4

Gene Alias

BORG4, CEP4, KAIA1777, MGC17125, MGC3740

Gene Description

CDC42 effector protein (Rho GTPase binding) 4

Omim ID

[605468](#)

Gene Ontology

[Hyperlink](#)

Gene Summary

The product of this gene is a member of the CDC42-binding protein family. Members of this family interact with Rho family GTPases and regulate the organization of the actin cytoskeleton. This protein has been shown to bind both CDC42 and TC10 GTPases in a GTP-dependent manner. When overexpressed in fibroblasts, this protein was able to induce pseudopodia formation, which suggested a role in inducing actin filament assembly and cell shape control. [provided by RefSeq]

Other Designations

Cdc42 effector protein 4|binder of Rho GTPases 4