

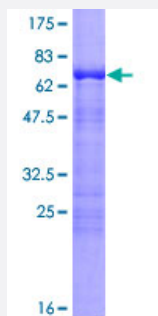
Full-Length

CDC42EP4 (Human) Recombinant Protein (P01)

Catalog # H00023580-P01

Size 25 ug, 10 ug

Applications



Specification

Product Description

Human CDC42EP4 full-length ORF (NP_036253.2, 1 a.a. - 356 a.a.) recombinant protein with GST-tag at N-terminal.

Sequence

MPILKQLVSSSVHSKRRSRADLTAEMISAPLGDFRHTMHVGRAGDAFGDTSFLNSKAGEPDGES
LDEQPSSSSSKRSLLSRKFRGSKRSQSVTRGEREQRDMLGSLRDSALFVKNAMSLPQLNEKEA
AEKGTSKLPKSLSSSPVKKANDGEGGDEEAGTEEA VPRRNGAAGPHSPDPLLDEQAFGDLTDL
PVVPKATYGLKHAESIMSFHIDLGPMSMLGDVLSIMDKEEWDPEEGEGGYHGDEGAAGTITQAPPY
AVAAPPLARQEGKAGPDLPSLPSHALEDEGWAAAAPSPGSARSMGSHHTRDSSSLSSCTSGIL
EERSPAFRGPDRARAASVRQPDKEFSFMDEEEDEIRV

Host

Wheat Germ (in vitro)

Theoretical MW (kDa)

64.4

Interspecies Antigen Sequence

Mouse (78); Rat (77)

Preparation Method

[in vitro wheat germ expression system](#)

Purification

Glutathione Sepharose 4 Fast Flow

Quality Control Testing

12.5% SDS-PAGE Stained with Coomassie Blue.

Storage Buffer

50 mM Tris-HCl, 10 mM reduced Glutathione, pH=8.0 in the elution buffer.

Storage Instruction

Store at -80°C. Aliquot to avoid repeated freezing and thawing.

Note

Best use within three months from the date of receipt of this protein.

Applications

- Enzyme-linked Immunoabsorbent Assay
- Western Blot (Recombinant protein)
- Antibody Production
- Protein Array

Gene Info — CDC42EP4

Entrez GeneID[23580](#)**GeneBank Accession#**[NM_012121.4](#)**Protein Accession#**[NP_036253.2](#)**Gene Name**

CDC42EP4

Gene Alias

BORG4, CEP4, KAIA1777, MGC17125, MGC3740

Gene Description

CDC42 effector protein (Rho GTPase binding) 4

Omim ID[605468](#)**Gene Ontology**[Hyperlink](#)**Gene Summary**

The product of this gene is a member of the CDC42-binding protein family. Members of this family interact with Rho family GTPases and regulate the organization of the actin cytoskeleton. This protein has been shown to bind both CDC42 and TC10 GTPases in a GTP-dependent manner. When overexpressed in fibroblasts, this protein was able to induce pseudopodia formation, which suggested a role in inducing actin filament assembly and cell shape control. [provided by RefSeq]

Other Designations

Cdc42 effector protein 4|binder of Rho GTPases 4

Publication Reference

- [Identification of ERK1 Direct Substrates using Stable Isotope Labeled Kinase Assay-Linked Phosphoproteomics.](#)

Xue L, Wang P, Cao P, Zhu JK, Tao WA.

Molecular & Cellular Proteomics 2014 Nov; 13(11):3199.

Application: IP-WB, Human, HEK293 cells