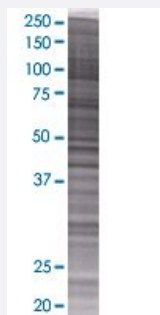


ARL2BP 293T Cell Transient Overexpression Lysate(Denatured)

Catalog # H00023568-T01

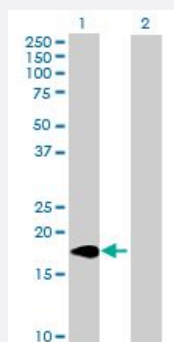
Size 100 uL

Applications



SDS-PAGE Gel

ARL2BP transfected lysate.



Western Blot

Lane 1: ARL2BP transfected lysate (18.8 KDa)

Lane 2: Non-transfected lysate.

Specification

Transfected Cell Line	293T
Plasmid	pCMV-ARL2BP full-length
Host	Human
Theoretical MW (kDa)	18.8
Interspecies Antigen Sequence	Mouse (95); Rat (94)

Quality Control Testing

Transient overexpression cell lysate was tested with Anti-ARL2BP antibody ([H00023568-B01](#)) by Western Blots.
SDS-PAGE Gel
ARL2BP transfected lysate.
Western Blot
Lane 1: ARL2BP transfected lysate (18.8 KDa)
Lane 2: Non-transfected lysate.

Storage Buffer

1X Sample Buffer (50 mM Tris-HCl, 2% SDS, 10% glycerol, 300 mM 2-mercaptoethanol, 0.01% Bromophenol blue)

Storage Instruction

Store at -80°C. Aliquot to avoid repeated freezing and thawing.

Applications

- Western Blot

Gene Info — ARL2BP

Entrez GeneID

[23568](#)

GeneBank Accession#

[NM_012106](#)

Protein Accession#

[NP_036238](#)

Gene Name

ARL2BP

Gene Alias

BART, BART1

Gene Description

ADP-ribosylation factor-like 2 binding protein

Gene Ontology

[Hyperlink](#)

Gene Summary

ADP-ribosylation factor (ARF)-like proteins (ARLs) comprise a functionally distinct group of the ARF family of RAS-related GTPases. The protein encoded by this gene binds to ARL2.GTP with high affinity but does not interact with ARL2.GDP, activated ARF, or RHO proteins. The lack of detectable membrane association of this protein or ARL2 upon activation of ARL2 is suggestive of actions distinct from those of the ARFs. This protein is considered to be the first ARL2-specific effect or identified, due to its interaction with ARL2.GTP but lack of ARL2 GTPase-activating protein activity. [provided by RefSeq]

Other Designations

Arf-like 2 binding protein BART1|binder of Arl Two|binder of Arl2