

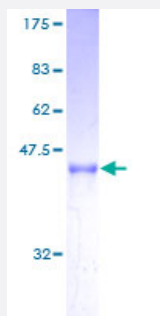
Full-Length

## ARL2BP (Human) Recombinant Protein (P01)

Catalog # H00023568-P01

Size 25 ug, 10 ug

### Applications



### Specification

<b>Product Description</b>	Human ARL2BP full-length ORF ( AAH03087, 1 a.a. - 163 a.a.) recombinant protein with GST-tag at N-terminal.
<b>Sequence</b>	MDALEGESFALSFSASDAEFDVVGYLEDIIMDDEFQLLQRNFMCKYILEFEDTEENKLIYPIFN EYISLVEKYIEEQLLQRIPEFNMAAFTTTLQHHKDEVAGDIFDMLLTFTDFLAFKEMFLDYRAEKEG RGLDLSSGLVVTSLCKSSSLPASQNNLRH
<b>Host</b>	Wheat Germ (in vitro)
<b>Theoretical MW (kDa)</b>	43.67
<b>Interspecies Antigen Sequence</b>	Mouse (95); Rat (94)
<b>Preparation Method</b>	<a href="#">in vitro wheat germ expression system</a>
<b>Purification</b>	Glutathione Sepharose 4 Fast Flow
<b>Quality Control Testing</b>	12.5% SDS-PAGE Stained with Coomassie Blue.
<b>Storage Buffer</b>	50 mM Tris-HCl, 10 mM reduced Glutathione, pH=8.0 in the elution buffer.
<b>Storage Instruction</b>	Store at -80°C. Aliquot to avoid repeated freezing and thawing.

## Note

Best use within three months from the date of receipt of this protein.

## Applications

- Enzyme-linked Immunoabsorbent Assay
- Western Blot (Recombinant protein)
- Antibody Production
- Protein Array

## Gene Info — ARL2BP

Entrez GeneID [23568](#)

GeneBank Accession# [BC003087](#)

Protein Accession# [AAH03087](#)

Gene Name ARL2BP

Gene Alias BART, BART1

Gene Description ADP-ribosylation factor-like 2 binding protein

Gene Ontology [Hyperlink](#)

**Gene Summary** ADP-ribosylation factor (ARF)-like proteins (ARLs) comprise a functionally distinct group of the ARF family of RAS-related GTPases. The protein encoded by this gene binds to ARL2.GTP with high affinity but does not interact with ARL2.GDP, activated ARF, or RHO proteins. The lack of detectable membrane association of this protein or ARL2 upon activation of ARL2 is suggestive of actions distinct from those of the ARFs. This protein is considered to be the first ARL2-specific effect or identified, due to its interaction with ARL2.GTP but lack of ARL2 GTPase-activating protein activity. [provided by RefSeq]

**Other Designations** Arf-like 2 binding protein BART1|binder of Arl Two|binder of Arl2