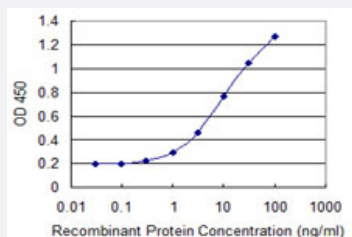


CHST5 monoclonal antibody (M05), clone 2E6

Catalog # H00023563-M05

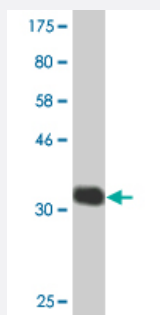
Size 100 ug

Applications



Sandwich ELISA (Recombinant protein)

Detection limit for recombinant GST tagged CHST5 is 0.1 ng/ml as a capture antibody.



Western Blot detection against Immunogen (34.65 KDa) .

Specification

Product Description

Mouse monoclonal antibody raised against a partial recombinant CHST5.

Immunogen

CHST5 (NP_036258.1, 310 a.a. ~ 390 a.a) partial recombinant protein with GST tag. MW of the GST tag alone is 26 KDa.

Sequence

GSGIGKPIEAFHTSSRNARNVSQAWRHALPFTKILRVQEVCAQALQLLGYRVPVYSADQQRDLTLDLVLPRGPDHFSWASPD

Host

Mouse

Reactivity

Human

Isotype

IgG2b Kappa

Quality Control Testing	Antibody Reactive Against Recombinant Protein. Western Blot detection against Immunogen (34.65 KDa) .
Storage Buffer	In 1x PBS, pH 7.4
Storage Instruction	Store at -20°C or lower. Aliquot to avoid repeated freezing and thawing.

Applications

- Western Blot (Recombinant protein)

[Protocol Download](#)

- Sandwich ELISA (Recombinant protein)

Detection limit for recombinant GST tagged CHST5 is 0.1 ng/ml as a capture antibody.

[Protocol Download](#)

- ELISA

Gene Info — CHST5

Entrez GeneID	23563
GeneBank Accession#	NM_012126
Protein Accession#	NP_036258.1
Gene Name	CHST5
Gene Alias	FLJ22167, I-GlcNAc-6-ST, MGC74625
Gene Description	carbohydrate (N-acetylglucosamine 6-O) sulfotransferase 5
Omim ID	604817
Gene Ontology	Hyperlink

Gene Summary

The carbohydrates of glycoconjugates are highly diverse structures with variation in monosaccharide composition, glycosidic linkage positions, and branching of chains. Further diversity is added by the covalent addition of sulfate moieties to particular hydroxyl groups and amino groups of saccharides. The sulfate modifications of glycoproteins can be extensive in amount and frequently occur at high density. They can have a profound effect on the physiochemical properties of the glycoconjugates, at least in part through the addition of negative charge. Carbohydrate sulfation plays a critical role in many biologic processes. CHST5 belongs to the GST family of sulfotransferases, which also includes CHST1 (MIM 603797), CHST2 (MIM 603798), CHST3 (MIM 603799), and LSS T. These enzymes are 6-O-sulfotransferases, which add sulfate to C6 of galactose (Gal), N-acetyl galactosamine (GalNAc), or N-acetylglucosamine (GlcNAc) (Lee et al., 1999 [PubMed 10491328]).[supplied by OMIM]

Other Designations

N-acetylglucosamine 6-O-sulfotransferase[OTTHUMP00000174950]intestinal GlcNAc-6-sulfotransferase

Publication Reference

- [Galacto-oligosaccharides may directly enhance intestinal barrier function through the modulation of goblet cells.](#)

Bhatia S, Prabhu PN, Benefiel AC, Miller MJ, Chow J, Davis SR, Gaskins HR.

Molecular Nutrition & Food Research 2015 Mar; 59(3):566.

Application: WB-Ce, Human, LS174T cells were treated with GOS for 96 h.

Disease

- [Adenocarcinoma](#)
- [Esophageal Neoplasms](#)
- [Genetic Predisposition to Disease](#)
- [Kidney Failure](#)