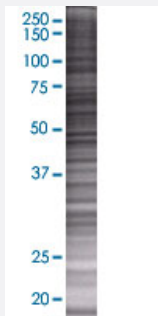


# CLDN14 293T Cell Transient Overexpression Lysate(Denatured)

Catalog # H00023562-T01

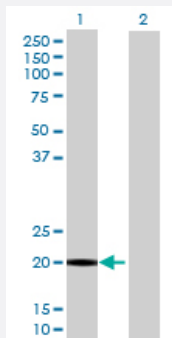
Size 100 uL

## Applications



### SDS-PAGE Gel

CLDN14 transfected lysate.



### Western Blot

Lane 1: CLDN14 transfected lysate ( 26.4 KDa)

Lane 2: Non-transfected lysate.

## Specification

Transfected Cell Line	293T
Plasmid	pCMV-CLDN14 full-length
Host	Human
Theoretical MW (kDa)	26.4
Interspecies Antigen Sequence	Mouse (93); Rat (93)

**Quality Control Testing**

Transient overexpression cell lysate was tested with Anti-CLDN14 antibody ([H00023562-B01](#)) by Western Blots.  
SDS-PAGE Gel  
CLDN14 transfected lysate.  
Western Blot  
Lane 1: CLDN14 transfected lysate ( 26.4 KDa)  
Lane 2: Non-transfected lysate.

**Storage Buffer**

1X Sample Buffer (50 mM Tris-HCl, 2% SDS, 10% glycerol, 300 mM 2-mercaptoethanol, 0.01% Bromophenol blue)

**Storage Instruction**

Store at -80°C. Aliquot to avoid repeated freezing and thawing.

## Applications

- Western Blot

## Gene Info — CLDN14

**Entrez GeneID**[23562](#)**GeneBank Accession#**[NM\\_012130.2](#)**Protein Accession#**[NP\\_036262.1](#)**Gene Name**

CLDN14

**Gene Alias**

DFNB29

**Gene Description**

claudin 14

**Omim ID**[605608](#)**Gene Ontology**[Hyperlink](#)**Gene Summary**

Tight junctions represent one mode of cell-to-cell adhesion in epithelial or endothelial cell sheets, forming continuous seals around cells and serving as a physical barrier to prevent solutes and water from passing freely through the paracellular space. These junctions are comprised of sets of continuous networking strands in the outwardly facing cytoplasmic leaflet, with complementary grooves in the inwardly facing extracytoplasmic leaflet. The protein encoded by this gene, a member of the claudin family, is an integral membrane protein and a component of tight junction strands. The encoded protein also binds specifically to the WW domain of Yes-associated protein. Defects in this gene are the cause of an autosomal recessive form of nonsyndromic sensorineural deafness. Several transcript variants encoding the same protein have been found for this gene. [provided by RefSeq]

**Other Designations**

OTTHUMP00000109045|OTTHUMP00000109046|OTTHUMP00000109047|OTTHUMP00000109048|OTTHUMP00000109049

## Pathway

- [Cell adhesion molecules \(CAMs\)](#)
- [Leukocyte transendothelial migration](#)
- [Tight junction](#)

## Disease

- [Genetic Predisposition to Disease](#)
- [Hearing Loss](#)
- [Kidney Calculi](#)
- [Tobacco Use Disorder](#)