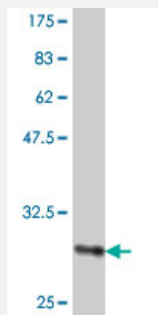


# CLDN14 polyclonal antibody (A01)

Catalog # H00023562-A01

Size 50 uL

## Applications



Western Blot detection against Immunogen (31.94 KDa) .

## Specification

<b>Product Description</b>	Mouse polyclonal antibody raised against a partial recombinant CLDN14.
<b>Immunogen</b>	CLDN14 (NP_036262, 29 a.a. ~ 81 a.a) partial recombinant protein with GST tag.
<b>Sequence</b>	HWRRTAHVGTNILTAVSYLKGLWMECVWHSTGTYQCQYRSLALPQDLQAAR
<b>Host</b>	Mouse
<b>Reactivity</b>	Human
<b>Interspecies Antigen Sequence</b>	Mouse (98); Rat (98)
<b>Quality Control Testing</b>	Antibody Reactive Against Recombinant Protein. Western Blot detection against Immunogen (31.94 KDa) .
<b>Storage Buffer</b>	50 % glycerol
<b>Storage Instruction</b>	Store at -20°C or lower. Aliquot to avoid repeated freezing and thawing.

## Applications

- Western Blot (Recombinant protein)

[Protocol Download](#)

- ELISA

## Gene Info — CLDN14

Entrez GeneID [23562](#)

GeneBank Accession# [NM\\_012130](#)

Protein Accession# [NP\\_036262](#)

Gene Name CLDN14

Gene Alias DFNB29

Gene Description claudin 14

Omim ID [605608](#)

Gene Ontology [Hyperlink](#)

**Gene Summary**

Tight junctions represent one mode of cell-to-cell adhesion in epithelial or endothelial cell sheets, forming continuous seals around cells and serving as a physical barrier to prevent solutes and water from passing freely through the paracellular space. These junctions are comprised of sets of continuous networking strands in the outwardly facing cytoplasmic leaflet, with complementary grooves in the inwardly facing extracytoplasmic leaflet. The protein encoded by this gene, a member of the claudin family, is an integral membrane protein and a component of tight junction strands. The encoded protein also binds specifically to the WW domain of Yes-associated protein. Defects in this gene are the cause of an autosomal recessive form of nonsyndromic sensorineural deafness. Several transcript variants encoding the same protein have been found for this gene. [provided by RefSeq]

**Other Designations** OTTHUMP00000109045|OTTHUMP00000109046|OTTHUMP00000109047|OTTHUMP00000109048|OTTHUMP00000109049

## Pathway

- [Cell adhesion molecules \(CAMs\)](#)
- [Leukocyte transendothelial migration](#)
- [Tight junction](#)

## Disease

- [Genetic Predisposition to Disease](#)
- [Hearing Loss](#)
- [Kidney Calculi](#)
- [Tobacco Use Disorder](#)