

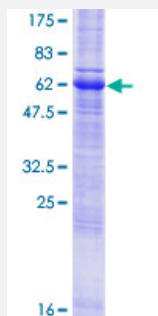
Full-Length

WBP1 (Human) Recombinant Protein (P01)

Catalog # H00023559-P01

Size 25 ug, 10 ug

Applications



Specification

Product Description

Human WBP1 full-length ORF (NP_036609.1, 1 a.a. - 269 a.a.) recombinant protein with GST-tag at N-terminal.

Sequence

MARASSGNGSEEA WGALRAPQQQLRELCPGVNNQPYLCESGHCCGETGCCTYYYELWWFWLL
WTVLILFSCCCAFRHRRAKLRLQQQQRQREINLLAYHGACHGAGPFPTGSLLDLRFLSTFKPPAY
EDVVHRPGTPPPPYTVAPGRPLTASSEQTCCSSSSSCPAHFEGTNVEGVSSHQSAPPHQEGEP
GAGVTPASTPPSCRYRRLTGDSGIELCPCPASGEGEPVKEVRVSATLPDLEDYSPCALPPESVP
QIFPMGLSSSEGDIP

Host

Wheat Germ (in vitro)

Theoretical MW (kDa)

55.5

Interspecies Antigen Sequence

Mouse (75); Rat (84)

Preparation Method

[in vitro wheat germ expression system](#)

Purification

Glutathione Sepharose 4 Fast Flow

Quality Control Testing

12.5% SDS-PAGE Stained with Coomassie Blue.

Storage Buffer

50 mM Tris-HCl, 10 mM reduced Glutathione, pH=8.0 in the elution buffer.

Storage Instruction

Store at -80°C. Aliquot to avoid repeated freezing and thawing.

Note

Best use within three months from the date of receipt of this protein.

Applications

- Enzyme-linked Immunoabsorbent Assay
- Western Blot (Recombinant protein)
- Antibody Production
- Protein Array

Gene Info — WBP1

Entrez GeneID[23559](#)**GeneBank Accession#**[NM_012477.2](#)**Protein Accession#**[NP_036609.1](#)**Gene Name**

WBP1

Gene Alias

MGC15305, WBP-1

Gene Description

WW domain binding protein 1

Omim ID[606961](#)**Gene Ontology**[Hyperlink](#)**Gene Summary**

The globular WW domain is composed of 38 to 40 semiconserved amino acids shared by proteins of diverse functions including structural, regulatory, and signaling proteins. The domain is involved in mediating protein-protein interactions through the binding of polyproline ligands. This gene encodes a WW domain binding protein, which binds to the WW domain of Yes kinase-associated protein by a conserved region: XPPXY motif. The function of this protein has not been determined. [provided by RefSeq]

Other Designations

-