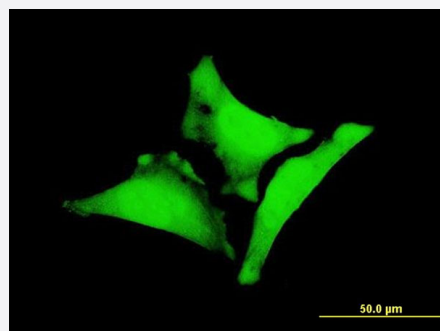


WBP1 monoclonal antibody (M06), clone 5F6

Catalog # H00023559-M06

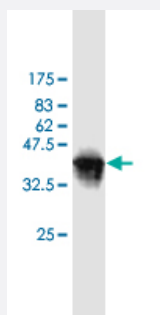
Size 100 ug

Applications



Immunofluorescence

Immunofluorescence of monoclonal antibody to WBP1 on HeLa cell . [antibody concentration 10 ug/ml]



Western Blot detection against Immunogen (36.52 KDa) .

Specification

Product Description

Mouse monoclonal antibody raised against a partial recombinant WBP1.

Immunogen

WBP1 (NP_036609, 170 a.a. ~ 267 a.a) partial recombinant protein with GST tag. MW of the GST tag alone is 26 KDa.

Sequence

GTNVEGVSSHQSAPPHQEGERGAGVTPASTPPSCRYRRLTGDSGIELCPCPASGEGEPVKEVR
VSATLPDLEDYSPCALPPESVPQIFPMGLSSSEG

Host

Mouse

Reactivity

Human

Interspecies Antigen Sequence	Mouse (78); Rat (76)
Isotype	IgG1 Kappa
Quality Control Testing	Antibody Reactive Against Recombinant Protein. Western Blot detection against Immunogen (36.52 KDa) .
Storage Buffer	In 1x PBS, pH 7.4
Storage Instruction	Store at -20°C or lower. Aliquot to avoid repeated freezing and thawing.

Applications

- Western Blot (Recombinant protein)

[Protocol Download](#)

- ELISA
- Immunofluorescence

Immunofluorescence of monoclonal antibody to WBP1 on HeLa cell . [antibody concentration 10 ug/ml]

Gene Info — WBP1

Entrez GeneID	23559
GeneBank Accession#	NM_012477
Protein Accession#	NP_036609
Gene Name	WBP1
Gene Alias	MGC15305, WBP-1
Gene Description	WW domain binding protein 1
Omim ID	606961
Gene Ontology	Hyperlink

Gene Summary

The globular WW domain is composed of 38 to 40 semiconserved amino acids shared by proteins of diverse functions including structural, regulatory, and signaling proteins. The domain is involved in mediating protein-protein interactions through the binding of polyproline ligands. This gene encodes a WW domain binding protein, which binds to the WW domain of Yes kinase-associated protein by a conserved region: XPPXY motif. The function of this protein has not been determined. [provided by RefSeq]

Other Designations

-