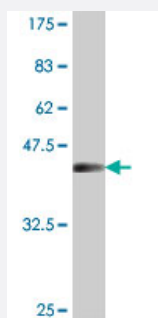


# WBP1 polyclonal antibody (A01)

Catalog # H00023559-A01

Size 50 uL

## Applications



Western Blot detection against Immunogen (36.89 KDa) .

## Specification

<b>Product Description</b>	Mouse polyclonal antibody raised against a partial recombinant WBP1.
<b>Immunogen</b>	WBP1 (NP_036609, 170 a.a. ~ 267 a.a) partial recombinant protein with GST tag.
<b>Sequence</b>	GTNVEGVSSHQSAPPHQEGERGAGVTPASTPPSCRYRRLTGDSGIELCPCPASGEGEPVKEVR VSATLPDLEDYSPCALPPESVPQIFPMGLSSSEG
<b>Host</b>	Mouse
<b>Reactivity</b>	Human
<b>Interspecies Antigen Sequence</b>	Mouse (78); Rat (76)
<b>Quality Control Testing</b>	Antibody Reactive Against Recombinant Protein. Western Blot detection against Immunogen (36.89 KDa) .
<b>Storage Buffer</b>	50 % glycerol
<b>Storage Instruction</b>	Store at -20°C or lower. Aliquot to avoid repeated freezing and thawing.

## Applications

- Western Blot (Recombinant protein)

[Protocol Download](#)

- ELISA

## Gene Info — WBP1

Entrez GeneID [23559](#)

GeneBank Accession# [NM\\_012477](#)

Protein Accession# [NP\\_036609](#)

Gene Name WBP1

Gene Alias MGC15305, WBP-1

Gene Description WW domain binding protein 1

Omim ID [606961](#)

Gene Ontology [Hyperlink](#)

**Gene Summary** The globular WW domain is composed of 38 to 40 semiconserved amino acids shared by proteins of diverse functions including structural, regulatory, and signaling proteins. The domain is involved in mediating protein-protein interactions through the binding of polyproline ligands. This gene encodes a WW domain binding protein, which binds to the WW domain of Yes kinase-associated protein by a conserved region: XPPXY motif. The function of this protein has not been determined. [provided by RefSeq]

Other Designations -