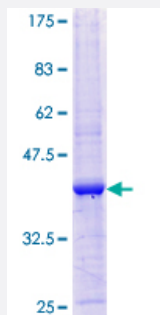


WBP2 (Human) Recombinant Protein (Q01)

Catalog # H00023558-Q01

Size 25 ug, 10 ug

Applications



Specification

Product Description	Human WBP2 partial ORF (NP_036610.2, 1 a.a. - 100 a.a.) recombinant protein with GST-tag at N-terminal.
Sequence	MALNKNHSEGGGVIVNNTESILMSYDHVELTFNDMKNVPEAFKGTKKGTVYLTPYRVIFLSKGKDA MQSFMMPPFYLMKDCEIKQPVFGANYIKGTVKAEA
Host	Wheat Germ (in vitro)
Theoretical MW (kDa)	36.74
Interspecies Antigen Sequence	Mouse (98); Rat (97)
Preparation Method	in vitro wheat germ expression system
Purification	Glutathione Sepharose 4 Fast Flow
Quality Control Testing	12.5% SDS-PAGE Stained with Coomassie Blue.
Storage Buffer	50 mM Tris-HCl, 10 mM reduced Glutathione, pH=8.0 in the elution buffer.
Storage Instruction	Store at -80°C. Aliquot to avoid repeated freezing and thawing.
Note	Best use within three months from the date of receipt of this protein.

Applications

- Enzyme-linked Immunoabsorbent Assay
- Western Blot (Recombinant protein)
- Antibody Production
- Protein Array

Gene Info — WBP2

Entrez GeneID [23558](#)

GeneBank Accession# [NM_012478](#)

Protein Accession# [NP_036610.2](#)

Gene Name WBP2

Gene Alias MGC18269, WBP-2

Gene Description WW domain binding protein 2

Omim ID [606962](#)

Gene Ontology [Hyperlink](#)

Gene Summary The globular WW domain is composed of 38 to 40 semiconserved amino acids shared by proteins of diverse functions including structural, regulatory, and signaling proteins. The domain is involved in mediating protein-protein interactions through the binding of polyproline ligands. This gene encodes a WW domain binding protein, which binds to the WW domain of Yes kinase-associated protein by its PY motifs. The function of this protein has not been determined. [provided by RefSeq]

Other Designations -