

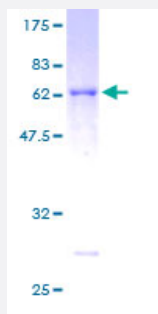
Full-Length

# WBP2 (Human) Recombinant Protein (P01)

Catalog # H00023558-P01

Size 10 ug, 25 ug

## Applications



## Specification

### Product Description

Human WBP2 full-length ORF ( AAH10616, 1 a.a. - 261 a.a.) recombinant protein with GST-tag at N-terminal.

### Sequence

MALNKNHSEGGGVIVNNTESILMSYDHVELTFNDMKNVPEAFKGTKKGTVYLTPYRVIFLSKGKDA  
MQSFMMPFYLMKDCEIKQPVFGANYKGTVKAEAGGGWEGSASYKLTFAGGAIEFGQRMLQVA  
SQASRGEVPSGAYGYSYMPSGAYVYPPPVANGMYCPPGYPPPPPEFYPGPPMMDGAMGY  
VQPPPPYPGPMEPPVSGPDVPSTPAEAKAAEAAASAYNPGNPHNVYMPTSQPPPPPYPP  
EDKKTQ

### Host

Wheat Germ (in vitro)

### Theoretical MW (kDa)

54.45

### Interspecies Antigen Sequence

Mouse (97); Rat (96)

### Preparation Method

[in vitro wheat germ expression system](#)

### Purification

Glutathione Sepharose 4 Fast Flow

### Quality Control Testing

12.5% SDS-PAGE Stained with Coomassie Blue.

### Storage Buffer

50 mM Tris-HCl, 10 mM reduced Glutathione, pH=8.0 in the elution buffer.

**Storage Instruction**

Store at -80°C. Aliquot to avoid repeated freezing and thawing.

**Note**

Best use within three months from the date of receipt of this protein.

## Applications

- Enzyme-linked Immunoabsorbent Assay
- Western Blot (Recombinant protein)
- Antibody Production
- Protein Array

## Gene Info — WBP2

**Entrez GeneID**[23558](#)**GeneBank Accession#**[BC010616](#)**Protein Accession#**[AAH10616](#)**Gene Name**

WBP2

**Gene Alias**

MGC18269, WBP-2

**Gene Description**

WW domain binding protein 2

**Omim ID**[606962](#)**Gene Ontology**[Hyperlink](#)**Gene Summary**

The globular WW domain is composed of 38 to 40 semiconserved amino acids shared by proteins of diverse functions including structural, regulatory, and signaling proteins. The domain is involved in mediating protein-protein interactions through the binding of polyproline ligands. This gene encodes a WW domain binding protein, which binds to the WW domain of Yes kinase-associated protein by its PY motifs. The function of this protein has not been determined. [provided by RefSeq]

**Other Designations**

-