

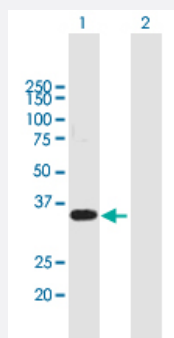
MaxPab®

# WBP2 purified MaxPab mouse polyclonal antibody (B02P)

Catalog # H00023558-B02P

Size 50 ug

## Applications



### Western Blot (Transfected lysate)

Western Blot analysis of WBP2 expression in transfected 293T cell line ([H00023558-T02](#)) by WBP2 MaxPab polyclonal antibody.

Lane 1: WBP2 transfected lysate(28.71 kDa).

Lane 2: Non-transfected lysate.

## Specification

### Product Description

Mouse polyclonal antibody raised against a full-length human WBP2 protein.

### Immunogen

WBP2 (NP\_036610.2, 1 a.a. ~ 261 a.a) full-length human protein.

### Sequence

MALNKNHSEGGGVIVNNTESILMSYDHVELTFNDMKNVPEAFKGTKKGTVYLTPIYRVIFLSKGGKDA  
MQSFMMPFYLMKDCEIKQPVFGANYIKGTVKAEGGGWEGSASYKLTFAGGAIEFGQRMLQVA  
SQASRGEVPSGAYGYSYMPSGAYVYPPPVANGMYCPCPGYPYPPPPPEFYPGPPMMDGAMGY  
VQPPPPYPGPMPEPPVSGPDVPSTPAAEAKAAEAAASAYNPGNPHNVYMPYSQPPPPPPYPP  
EDKKTQ

### Host

Mouse

### Reactivity

Human

### Interspecies Antigen Sequence

Mouse (97); Rat (96)

### Quality Control Testing

Antibody reactive against mammalian transfected lysate.

### Storage Buffer

In 1x PBS, pH 7.4

### Storage Instruction

Store at -20°C or lower. Aliquot to avoid repeated freezing and thawing.

## Applications

- Western Blot (Transfected lysate)

Western Blot analysis of WBP2 expression in transfected 293T cell line ([H00023558-T02](#)) by WBP2 MaxPab polyclonal antibody.

Lane 1: WBP2 transfected lysate(28.71 KDa).

Lane 2: Non-transfected lysate.

[Protocol Download](#)

## Gene Info — WBP2

Entrez GeneID [23558](#)

GeneBank Accession# [NM\\_012478.3](#)

Protein Accession# [NP\\_036610.2](#)

Gene Name WBP2

Gene Alias MGC18269, WBP-2

Gene Description WW domain binding protein 2

Omim ID [606962](#)

Gene Ontology [Hyperlink](#)

**Gene Summary** The globular WW domain is composed of 38 to 40 semiconserved amino acids shared by proteins of diverse functions including structural, regulatory, and signaling proteins. The domain is involved in mediating protein-protein interactions through the binding of polyproline ligands. This gene encodes a WW domain binding protein, which binds to the WW domain of Yes kinase-associated protein by its PY motifs. The function of this protein has not been determined. [provided by RefSeq]

Other Designations -