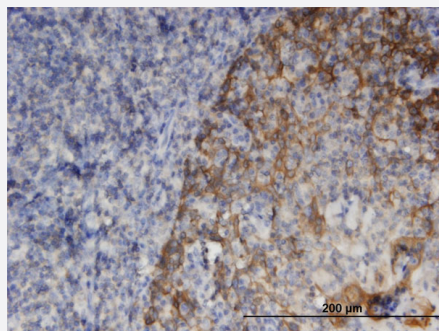


SNAPAP monoclonal antibody (M01), clone 3H1

Catalog # H00023557-M01

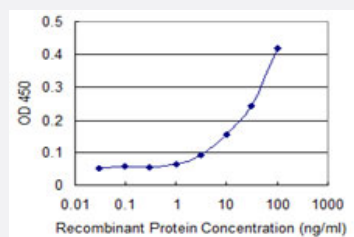
Size 100 ug

Applications



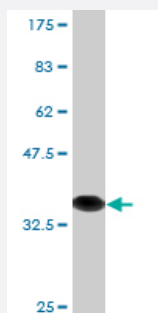
Immunohistochemistry (Formalin/PFA-fixed paraffin-embedded sections)

Immunoperoxidase of monoclonal antibody to SNAPIN on formalin-fixed paraffin-embedded human tonsil. [antibody concentration 3 ug/ml]



Sandwich ELISA (Recombinant protein)

Detection limit for recombinant GST tagged SNAPIN is 1 ng/ml as a capture antibody.



Western Blot detection against Immunogen (36.3 KDa) .

Specification

Product Description

Mouse monoclonal antibody raised against a partial recombinant SNAPAP.

Immunogen	SNAPAP (NP_036569.1, 41 a.a. ~ 136 a.a) partial recombinant protein with GST tag. MW of the GST tag alone is 26 KDa.
Sequence	DSHVHAVRESQVELREQIDNLATELCRINEDQKVALDLDPYVKLLNARRRVVLVNNILQNAQERLRRLNHSVAKETARRRAMLD SGYPGSPGK
Host	Mouse
Reactivity	Human
Interspecies Antigen Sequence	Mouse (98); Rat (98)
Isotype	IgG1 Kappa
Quality Control Testing	Antibody Reactive Against Recombinant Protein. Western Blot detection against Immunogen (36.3 KDa) .
Storage Buffer	In 1x PBS, pH 7.4
Storage Instruction	Store at -20°C or lower. Aliquot to avoid repeated freezing and thawing.

Applications

- Western Blot (Recombinant protein)

[Protocol Download](#)

- Immunohistochemistry (Formalin/PFA-fixed paraffin-embedded sections)

Immunoperoxidase of monoclonal antibody to SNAPIN on formalin-fixed paraffin-embedded human tonsil. [antibody concentration 3 ug/ml]

[Protocol Download](#)

- Sandwich ELISA (Recombinant protein)

Detection limit for recombinant GST tagged SNAPIN is 1 ng/ml as a capture antibody.

[Protocol Download](#)

- ELISA

Gene Info — SNAPIN

Entrez GeneID

[23557](#)

GeneBank Accession#	NM_012437
Protein Accession#	NP_036569.1
Gene Name	SNAPIN
Gene Alias	SNAPAP
Gene Description	SNAP-associated protein
Omim ID	607007
Gene Ontology	Hyperlink
Gene Summary	SNAPAP is a component of the SNARE complex of proteins that is required for synaptic vesicle docking and fusion (Ilardi et al., 1999 [PubMed 10195194]). SNAPAP is also a component of the ubiquitously expressed BLOC1 multisubunit protein complex. BLOC1 is required for normal biogenesis of specialized organelles of the endosomal-lysosomal system, such as melanosomes and platelet dense granules (Starcevic and Dell'Angelica, 2004 [PubMed 15102850]).[supplied by OMIM]
Other Designations	OTTHUMP00000035157 SNAP-25-binding protein SNARE associated protein snapin